



The Canadian Community Health Survey (CCHS) and its utility for RHAs

**Donald Schopflocher, PhD
Biostatistician
Health Surveillance Branch
Alberta Health and Wellness**

November 16, 2004

Overview

Background: Health Indicators

CCHS: What is it?

: How can I access it?

Challenges

Examples

Two Focii in Analysis of Health Surveys

- ‘Research’ oriented
 - Health Determinants / Risk factors
 - population focused
 - centred on ‘cause’
 - structural models (i.e. regression, SEM)
- ‘Policy’ oriented
 - Indicators and Indicator Frameworks
 - focused on ‘here and now’ / situated
 - centred on ‘flow’
 - Comparative (i.e. tables)

Health Indicators

A perfect health indicator would consist of

- a single measure
- with a clear and valid interpretation
- relevant to a clearly specified population and/or sets of hierarchically nested populations
- measured repeatedly over time
- delivering clear implications for policy/action.

Health Indicators (cont'd)

- A health indicator framework organises a set of health indicators for conceptual clarity to enhance joint use in health policy.
- Example: CIHI/Statistics Canada

File Edit Document Tools View Window Help

140%



Statistics Canada
Statistique Canada



Canadian Institute for Health Information
Institut canadien d'information sur la santé

Health Indicators

Health Status

Well-Being	Health Conditions	Human Function	Deaths
<ul style="list-style-type: none"> • Self-rated health • Self-rated health as 'very good' or 'excellent' for two or more consecutive survey cycles • Self-esteem 	<ul style="list-style-type: none"> • Body mass index (BMI), Canadian standard • Body mass index (BMI), International standard • Arthritis/rheumatism • Diabetes • Asthma • High blood pressure • Chronic pain - affects activities • Chronic pain - severity • Depression • Low birth weight Cancer incidence, age-standardized rates: <ul style="list-style-type: none"> • All cancer incidence • Lung cancer incidence • Colorectal cancer incidence • Breast-female cancer incidence 	<ul style="list-style-type: none"> • Functional health • Two-week disability days • Activity limitation • Conditions causing activity limitation • Disability-free life expectancy • Disability-adjusted life expectancy • Disability-adjusted life years • Health expectancy 	<ul style="list-style-type: none"> • Infant mortality • Perinatal mortality • Life expectancy <p>Mortality crude counts/rates, age-standardized rates:</p> <ul style="list-style-type: none"> • Total mortality • All circulatory disease deaths • Ischaemic heart disease deaths • Cerebrovascular disease deaths • All other circulatory disease deaths • All cancer deaths • Lung cancer deaths • Colorectal cancer deaths • Breast-female cancer deaths • Prostate cancer deaths • All respiratory disease deaths • Pneumonia and influenza deaths • Bronchitis, emphysema and asthma deaths

Bookmarks

Thumbnails



140% [Zoom controls]

Bookmarks
Thumbnails

			<ul style="list-style-type: none"> • All circulatory PYLL • All respiratory PYLL • Unintentional injuries PYLL • Suicide PYLL
--	--	--	---

Non-Medical Determinants of Health

Health Behaviours	Living and Working Conditions	Personal Resources	Environmental Factors
<ul style="list-style-type: none"> • Smoking status • Smoking initiation • Quitting smoking • Frequency of heavy drinking • Leisure-time physical activity • Breastfeeding practices • Dietary practices 	<ul style="list-style-type: none"> • High school graduates • Post-secondary graduates • Average number of years of schooling • Unemployment rate • Long-term unemployment rate • Low income rate • Children in low income families • Average personal income • Housing affordability • Decision latitude at work • Income inequality • Government transfer income • Owner-occupied dwellings • Crime rate and youth crime rate** 	<ul style="list-style-type: none"> • School readiness • Social support • Life stress 	<ul style="list-style-type: none"> • Exposure to second-hand smoke

Health System Performance

Acceptability	Accessibility	Appropriateness	Competence
	<ul style="list-style-type: none"> • Influenza immunization, 65 years and over • Screening mammography, women aged 50-69 years • Pap smear, women aged 18-69 years • Childhood immunizations* 	<ul style="list-style-type: none"> • Vaginal birth after caesarean • Caesarean sections 	
Continuity	Effectiveness	Efficiency	Safety
	<ul style="list-style-type: none"> • Pertussis • Measles • Tuberculosis • HIV • Chlamydia • Pneumonia and influenza hospitalizations <p>Deaths due to medically-treatable diseases, age-standardized rates:</p> <ul style="list-style-type: none"> • Bacterial infections • Cervical cancer • Hypertensive disease • Pneumonia and unspecified bronchitis <ul style="list-style-type: none"> • Ambulatory care sensitive conditions • 30-day AMI in-hospital mortality • 30-day stroke in-hospital mortality <p>Re-admissions:</p>	<ul style="list-style-type: none"> • May not require hospitalization • Expected compared to actual stay 	<ul style="list-style-type: none"> • Hip fracture hospitalization

Bookmarks
Thumbnails



140%

Bookmarks
Thumbnails

- Prostatectomy
- Hysterectomy

Community and Health System Characteristics

Community	Health System	Resources
<ul style="list-style-type: none"> • Population • Population density • Dependency ratio • Urban population • Aboriginal population • Immigrant population • 1- and 5-year mobility • Population within strong Census Metropolitan Area and Census Agglomeration Influenced Zones (MIZ) • Lone-parent families • Visible minorities • Teen pregnancy** 	<ul style="list-style-type: none"> • Inflow/outflow ratio • Coronary artery bypass graft (CABG) • Hip replacement • Knee replacement • Hysterectomy • Contact with alternative health care providers • Contact with health professionals • Contact with health professionals about mental health • Contact with dental professionals 	<ul style="list-style-type: none"> • Health Expenditures • Doctors • Nurses • Other health professionals

* Data quality, definition or data availability are uncertain at this point in time.

** Province-level data only for the next few years

Published by the authority of the Minister responsible for Statistics Canada

- © Ministry of Industry, 2002
- © Canadian Institute for Health Information

Contents of this publication may be reproduced in whole or in part provided the intended use is for non-commercial purposes and the sources are clearly identified.

Drawbacks to Health Indicators

- Measurement issues ignored
 - The ‘indicator’ becomes ‘the thing indicated’
- Covariance and therefore causal relationships ignored
 - typically in favour of ‘intuitive’ models

Trends in Dissemination

- Products (Data): Tables =====> **Databases**
- Analysis: Numbers =====> **Statistical Statements**
Tables =====> **Graphs**
- Products: Reports =====> **Web Documents**

How can Indicators be effectively disseminated?

Other General Challenges

- How important is it to have data from a particular area from the immediate past? For how large an area? How soon? Are there general guidelines?
- What can be fairly concluded from general rating/ranking systems?

Can't we do better than "Macleans"?

Maclean's - June 16, 2003 - SAY AHHHHH! (The 5th Annual Health-Care Ranking)

File Edit View Favorites Tools Help Address <http://m1.buysub.com/webapp> Go

Payment
Our Rogers Bill
Books &
Back Issues
e Recipe s And Books
e Back Issues
arent foys
ck Issues

MACLEAN'S

THE FIFTH ANNUAL HEALTH CARE RANKING
SAY AHHHHH!
New family services are changing the relationship between Canadians and their doctors

(vol.116, #24) **Cover Stories**
SAY AHHHHH! (pg.22) - Our fifth annual ranking of health care finds doctors embracing a team approach and the best services concentrating in cities.

Features

- Diplomacy | Differences aside (pg.32) - At the G8 and in the Mideast, George Bush covered a lot of territory.
- First Nations | Time of reckoning (pg.37) - Ottawa adopted a top-down process in dealing with Natives. It's paying the price.
- Politics | Troublesome Tories (pg.40) - Rick Salutin on how a controversial deal gave new life to an old debate.
- Q&A | Mary Walsh (pg.46) - A Canadian comic talks about books.
- Will Ferguson's Canada | Two Cities (pg.50) - How

Internet

Focusing on the CCHS Cycle1.1....

CCHS (Canadian Community Health Survey) 2001

- 45 minute health survey administered
 - in person and by telephone
- to cross-sectional sample
 - of ~130,000 Canadians (~14000 Albertans)
 - in 136 ‘Health Regions’ (including 17 Alberta RHAs by 1998 borders)
- every two years
- (replacing cross-sectional use of NPHS)

Common content modules

- [Alcohol](#)
- [Chronic conditions](#)
- [Exposure to second-hand smoke](#)
- [Flu shots](#)
- [Fruit and vegetable consumption](#)
- [General health](#)
- [Health care utilisation](#)
- [Height and weight](#)
- [Home care](#)
- [Injuries](#)
- [Insurance](#)
- [Mammography](#)
- [Maternal experiences](#)
- [Oral health – common](#)
- [Pap smear test](#)
- [Physical activities](#)
- [Restriction of activities](#)
- [Sexual behaviour](#)
- [Smoking](#)
- [Two-week disability](#)
- [Voluntary organisations](#)
- [Youth smoking](#)

Statistics
Canada Statistique
Canada

Canada



Français	Contact Us	Help	Search	Canada Site
The Daily	Canadian	Community	Our products	Home
Census	Statistics	Profiles	and services	Other Links

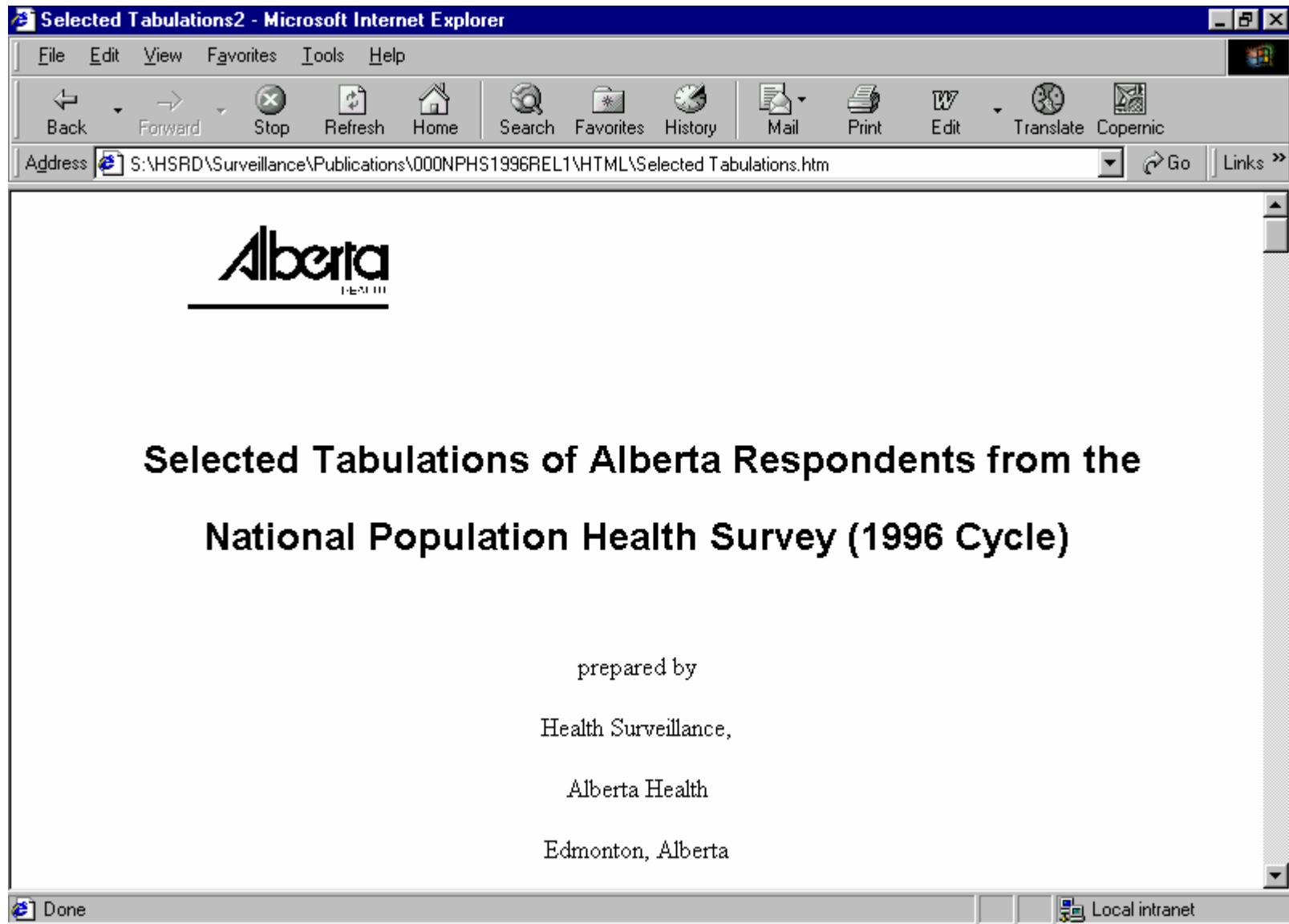
[Definitions, data sources and methods](#) > [New Surveys](#) > [Population Health Surveys](#) > [CCHS Cycle 2.1](#) > [Questionnaire](#) >

Optional content modules

[Alcohol dependence](#)
[Blood pressure check](#)
[Breast examinations](#)
[Breast self-examinations](#)
[Changes made to improve health](#)
[Colorectal cancer screening](#)
[Contacts with mental health professionals](#)
[Dental visits*](#)
[Depression](#)
[Dietary supplement use](#)
[Distress](#)
[Driving and safety*](#)
[Eating troubles](#)
[Food choices](#)

- [Food choices](#)
- [Food insecurity](#)
- [Health care system satisfaction](#)
- [Health utility index*](#)
- [Home safety](#)
- [Illicit drug use](#)
- [Leisure activities](#)
- [Mastery](#)
- [Medication use*](#)
- [Nicotine dependence](#)
- [Oral health – optional*](#)
- [Patient satisfaction*](#)
- [Physical check-up](#)
- [Physician counseling \(smoking\)](#)
- [Problem gambling](#)
- [Prostate cancer screening](#)
- [Psychological well-being manifestation scale](#)
- [Satisfaction with availability of health care services](#)
- [Satisfaction with life](#)
- [Sedentary activities](#)
- [Self-esteem](#)
- [Sf-36](#)
- [Smoking cessation aids](#)
- [Social support](#)
- [Stages of change \(smoking\)](#)
- [Suicidal thoughts and attempts](#)
- [Tobacco alternatives](#)
- [Use of protective equipment](#)
- [Work stress](#)

Previously in Alberta...



The screenshot shows a Microsoft Internet Explorer browser window. The title bar reads "Selected Tabulations2 - Microsoft Internet Explorer". The menu bar includes File, Edit, View, Favorites, Tools, and Help. The toolbar contains icons for Back, Forward, Stop, Refresh, Home, Search, Favorites, History, Mail, Print, Edit, Translate, and Copernic. The address bar shows the URL: S:\HSRD\Surveillance\Publications\000NPHS1996REL1\HTML\Selected Tabulations.htm. The main content area displays the Alberta Health logo at the top, followed by the title "Selected Tabulations of Alberta Respondents from the National Population Health Survey (1996 Cycle)" in bold. Below the title, it says "prepared by Health Surveillance, Alberta Health, Edmonton, Alberta". The status bar at the bottom shows "Done" and "Local intranet".

Selected Tabulations of Alberta Respondents from the National Population Health Survey (1996 Cycle)

prepared by
Health Surveillance,
Alberta Health
Edmonton, Alberta

The 55 tabulated variables are presented in the order in which they appear in NPBS documentation. As described above, tables are broken down by the categorical variables listed above.

<u>NPBS Variable Name</u>	<u>Concept</u>	<u>Table</u>
HCC6_1	Percent who have been a patient overnight in a hospital, nursing home or convalescent home in the past 12 months	1
HCC6_1A	For those who have been a patient overnight in a hospital, nursing home or convalescent home in the past 12 months, the number of nights as a patient	2
HCC6DMDC	Derived - number of consultations with medical doctors	3
HCC6DHPC	Derived - number of consultations with health professionals	4
RAC6F1	Percent who have a long-term health problem that limits the amount of activity they can do	5
HCC6_1A	Percent who have a food allergy diagnosed by a health professional	6

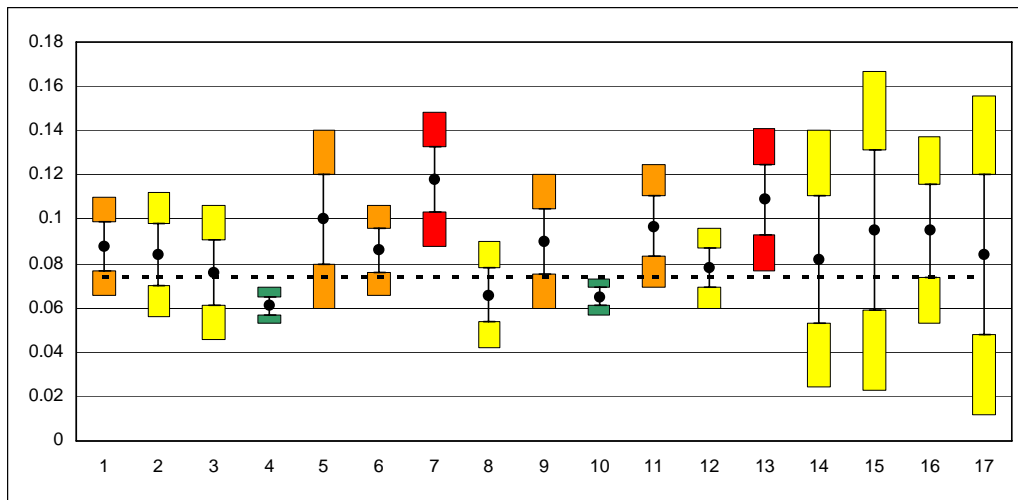
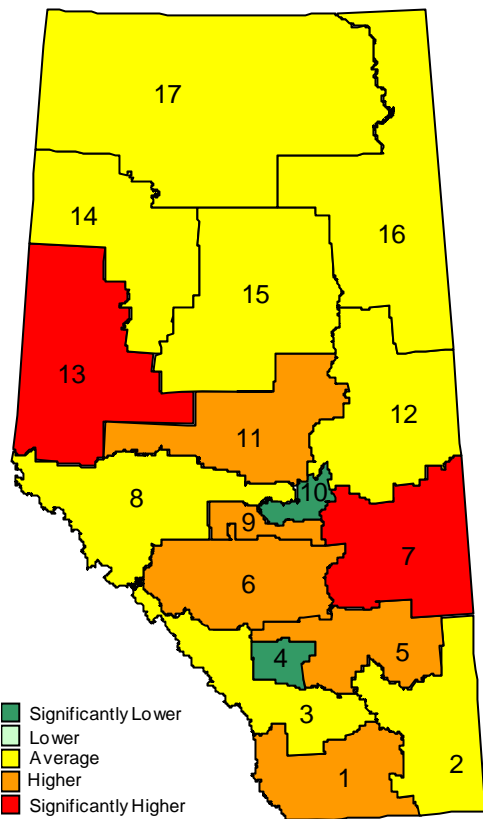
Tables 1A-D Overnight Patient

Breakdown by Age and Sex
NPHS: Alberta (1996)

		Sex						Table Total		
		Male			Female			.00		
		Overnight in hospital - past 12 months			Overnight in hospital - past 12 months			Overnight in hospital - past 12 months		
		Sample Size	Mean	Standard Error	Sample Size	Mean	Standard Error	Sample Size	Mean	Standard Error
	12 to 14 Years	245	.021	.007	254	.031	.009	499	.026	.006
	15 to 19 Years	449	.040	.008	434	.056	.010	883	.048	.006
	20 to 24 Years	460	.049	.009	537	.132	.014	997	.091	.009

By RHA and Sex
NPHS: Alberta (1996)

		Sex						Table Total		
		Male			Female			.00		
		Overnight in hospital - past 12 months			Overnight in hospital - past 12 months			Overnight in hospital - past 12 months		
		Sample Size	Mean	Standard Error	Sample Size	Mean	Standard Error	Sample Size	Mean	Standard Error
	Chinook	366	.073	.014	444	.103	.016	810	.088	.011
	Palliser	252	.069	.018	318	.099	.021	570	.084	.014
	Headwaters	250	.068	.020	281	.084	.022	531	.076	.015
	Calgary	1277	.042	.004	1492	.080	.006	2769	.061	.004
	Region No. 5	187	.090	.027	208	.111	.030	395	.100	.020
	David Thompson	426	.074	.013	502	.098	.015	928	.086	.010



This time...

C:\Documents and Settings\donald.schopfloch... \Desktop\CCHSrelated.htm - Microsoft Internet E...

File Edit View Favorites Tools Help Address C:\Documents and Settings\donald.schopfloct Go

← → × ↻ 🏠 🔍 📁 🌐 📄 📧 📧 📧 Links Best of t Powermarks

[1. Statistics Canada: Population health surveys](#)
statcan

[1.1 CCHS 1.1](#)
statcan

[2. Statistics Canada: Health Indicators](#)
statcan

[2.1 Latest Health Indicators Release](#)
statcan

[2.2 Statistics Canada Health Indicators Links](#)
statcan

[3. CIHI: Roadmap Initiative](#)
cihi

[3.1 CIHI: About Health Indicators](#)
cihi

[3.1.1 CIHI: Health Indicators Framework](#)
cihi

[3.1.2 CIHI: Health Indicators Reports](#)

[4. Alberta Healthy Living Network \(AHLN\)](#)
AHLN

Done My Computer



Statistics Canada / Statistique Canada

Canada



Français	Contact Us	Help	Search	Canada Site
The Daily	Canadian Statistics	Community Profiles	Our products and services	Home
Census				Other Links

[Health Indicators, vol. 2004, no. 1](#) >

Health Indicators

82-221-XIE

- [About Health Indicators](#)
- [Health regions](#)
- [Highlights](#)
- [Data tables](#)
- [Profiles](#)

What's new in this issue

Health region level data for 2003 are now available from the second cycle of Statistics Canada's Canadian Community Health Survey (CCHS). Thirty indicators are presented as individual CANSIM tables along with maps found in the data tables section of the publication. Maps have also been produced for all indicators based on 2001 Census data. Population estimates, at the health region level, from 1996 to 2001 by sex and five year age groups are now available in this issue.

An indicator related to patient safety in acute care institutions, namely hip fracture that occurs in hospital, is introduced in this release under the Health



Statistics Canada Statistique Canada

Canada



Français	Contact Us	Help	Search	Canada Site
The Daily	Canadian Statistics	Community Profiles	Our products and services	Home
Census				Other Links

[Health Indicators, vol. 2004, no. 1](#) >

Data tables

[TABLE INDEX](#)

Statistics Canada obtains its health indicators data from various sources, as does the Canadian Institute for Health Information (CIHI).

Data tables are presented below according to the Health Indicator framework.

- [Health status](#)
- [Non-medical determinants of health](#)
- [Health system performance](#)
- [Community and health system characteristics](#)

Health Indicators
82-221-XIE

[About Health Indicators](#)

[Health regions](#)

[Highlights](#)

[Data tables](#)

[Profiles](#)

products

About CIHI



Health status

Well-being

Statistics Canada

CIHI

- [Self-rated health](#)
- [Self-esteem](#)

Health conditions

Statistics Canada

CIHI

- | | |
|---|--|
| <ul style="list-style-type: none"> • Body mass index (BMI) • Chronic conditions • Low birth weight • Cancer incidence • Injuries | <ul style="list-style-type: none"> • Injuries |
|---|--|

Human function

Statistics Canada

CIHI

- [Disabilities/limitations](#)
- [Life-expectancy without disability](#)

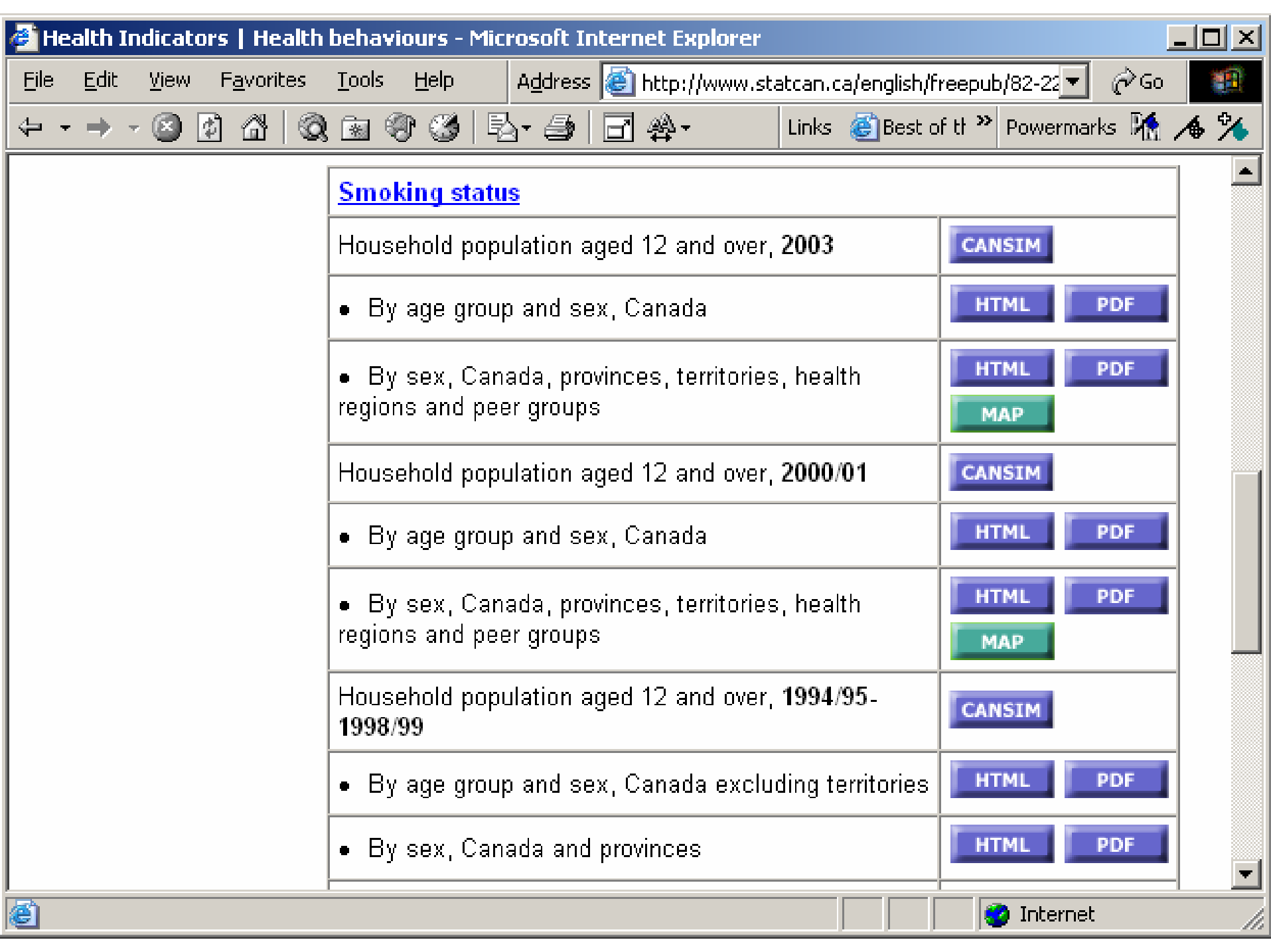
Deaths

Statistics Canada

CIHI

- [Infant/perinatal mortality](#)
- [Life expectancy](#)
- [Mortality by selected causes](#)
- [Potential years of life lost](#)

Non-medical determinants of health	
Health behaviours	
Statistics Canada	CIHI
<ul style="list-style-type: none"> • Smoking • Drinking • Physical activity • Breastfeeding practices • Dietary practices 	
Living and working conditions	
Statistics Canada	CIHI
<ul style="list-style-type: none"> • Education • Labour force • Income • Housing • Decision latitude at work • Crime 	
Personal resources	
Statistics Canada	CIHI
<ul style="list-style-type: none"> • Social support • Life stress 	
Environmental factors	
Statistics Canada	CIHI



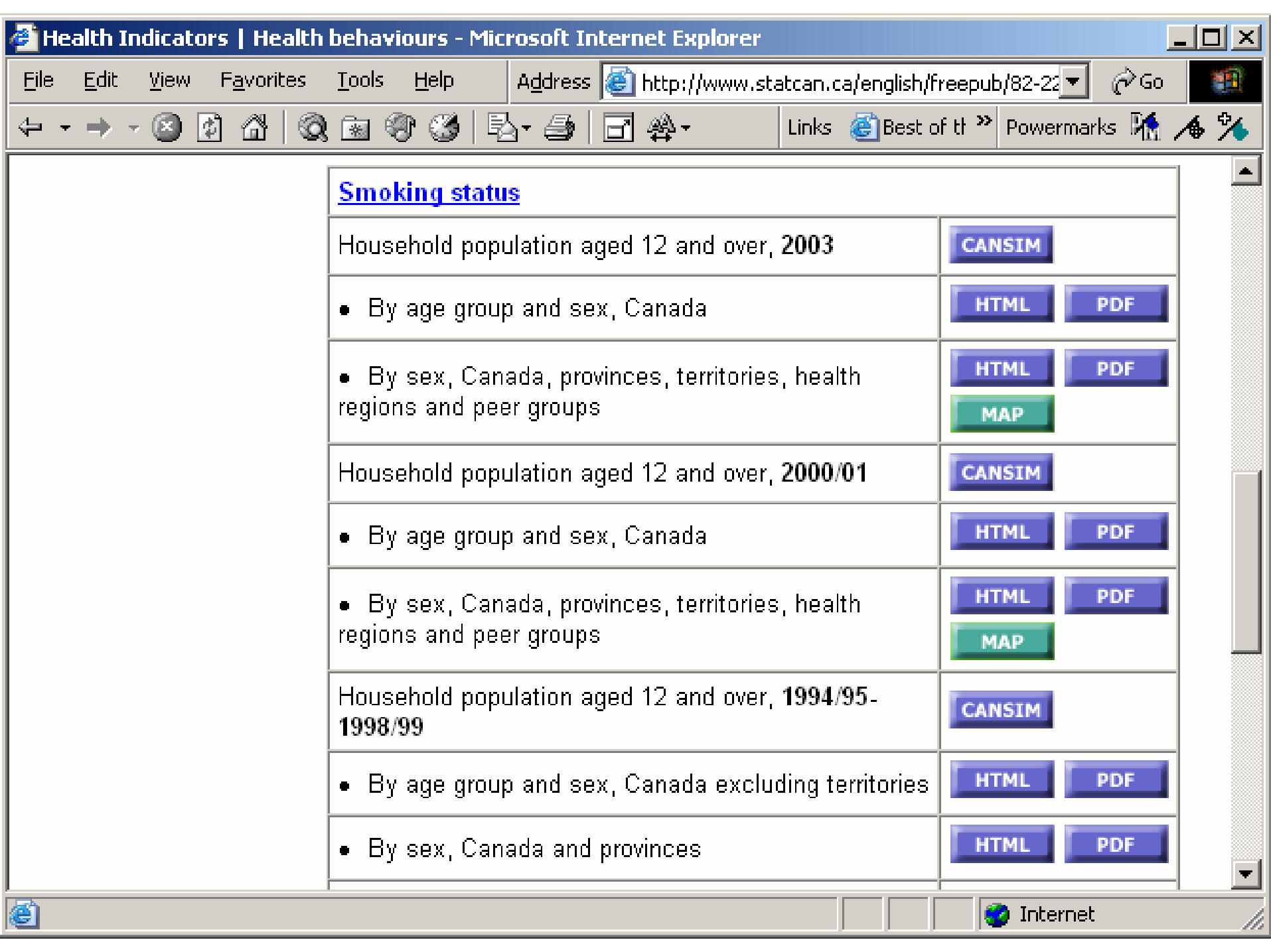
Smoking status

Household population aged 12 and over, 2003	CANSIM
<ul style="list-style-type: none"> • By age group and sex, Canada 	HTML PDF
<ul style="list-style-type: none"> • By sex, Canada, provinces, territories, health regions and peer groups 	HTML PDF MAP
Household population aged 12 and over, 2000/01	CANSIM
<ul style="list-style-type: none"> • By age group and sex, Canada 	HTML PDF
<ul style="list-style-type: none"> • By sex, Canada, provinces, territories, health regions and peer groups 	HTML PDF MAP
Household population aged 12 and over, 1994/95-1998/99	CANSIM
<ul style="list-style-type: none"> • By age group and sex, Canada excluding territories 	HTML PDF
<ul style="list-style-type: none"> • By sex, Canada and provinces 	HTML PDF

Smoking status, by sex, household population aged 12 and over, Canada, provinces, territories, health regions and peer groups, 2003

Smoking status	Total	Daily smoker		Occasional smoker		Former smoker		Never smoker
	Number	Number	%	Number	%	Number	%	Number
2003								
00 Canada	26,578,125	4,728,849	17.8	1,356,360	5.1	10,422,572	39.2	9,911,545
Males	13,090,299	2,538,239	19.4	729,115	5.6	5,548,362	42.4	4,198,140
Females	13,487,826	2,190,610	16.2	627,246	4.7	4,874,210	36.1	5,713,405
10 Newfoundland and Labrador	460,130	91,642	19.9	18,916	4.1	199,806	43.4	148,113
Males	226,255	50,309	22.2	10,353 ^E	4.6 ^E	107,436	47.5	57,199
Females	233,875	41,333	17.7	8,564	3.7	92,370	39.5	90,914
1001-A HCS St. John's Region, NL	165,135	30,144	18.3	6,070 ^E	3.7 ^E	69,830	42.3	58,446
Males	80,271	18,316	22.8	F	F	34,307	42.7	24,201
Females	84,864	11,828 ^E	13.9 ^E	3,072 ^E	3.6 ^E	35,523	41.9	34,245
1002-I HCS Eastern Region, NL	99,438	22,215	22.3	3,661 ^E	3.7 ^E	42,672	42.9	30,647
Males	48,821	11,422	23.4	2,269 ^E	4.6 ^E	24,195	49.5	10,802

Smoking status, by sex, household population aged 12 and over, Canada, provinces, territories, - Micro...									
http://www.statcan.ca/english/freepub/82-22									
Females	5,666	1,777	31.4	609 E	10.8 E	1,762	31.1	1,460	
48 Alberta	2,604,212	456,278	17.5	138,795	5.3	1,000,199	38.4	987,138	
Males	1,310,038	251,840	19.2	70,829	5.4	549,541	41.9	427,888	
Females	1,294,174	204,437	15.8	67,965	5.3	450,658	34.8	559,250	
4820-E Chinook RHA, AB	123,374	19,829	16.1	4,959 E	4.0 E	46,421	37.6	51,366	
Males	61,598	12,397	20.1	2,864 E	4.6 E	26,179	42.5	19,770	
Females	61,777	7,432 E	12.0 E	2,095 E	3.4 E	20,241	32.8	31,617	
4821-E Palliser HR, AB	82,667	19,840	24.0	3,300 E	4.0 E	30,019	36.3	29,100	
Males	42,004	10,456	24.9	1,961 E	4.7 E	16,741	39.9	12,568	
Females	40,664	9,385	23.1	1,339 E	3.3 E	13,278	32.7	16,532	
4822-B Calgary HR, AB	944,707	136,551	14.5	54,660	5.8	383,249	40.6	364,616	
Males	475,809	76,595	16.1	30,418	6.4	205,111	43.1	160,664	
Females	468,899	59,957	12.8	24,241	5.2	178,138	38.0	203,952	
4823-E David Thompson RHA, AB	243,611	53,510	22.0	12,882	5.3	89,740	36.8	85,464	
Males	122,497	28,422	23.2	5,722 E	4.7 E	51,465	42.0	35,950	
Females	121,114	25,088	20.7	7,160 E	5.9 E	38,275	31.6	49,514	



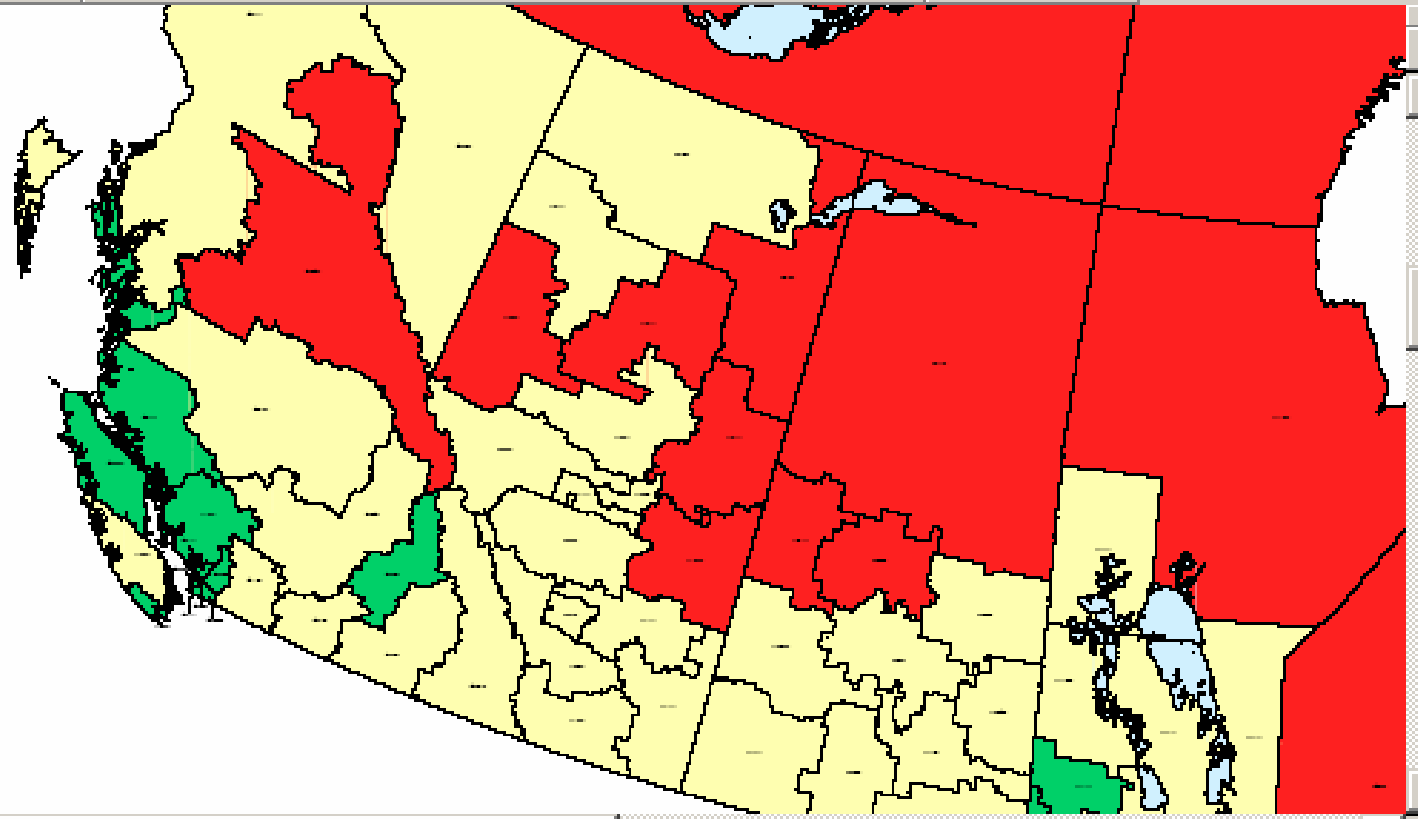
Smoking status

Household population aged 12 and over, 2003	CANSIM
<ul style="list-style-type: none"> • By age group and sex, Canada 	HTML PDF
<ul style="list-style-type: none"> • By sex, Canada, provinces, territories, health regions and peer groups 	HTML PDF MAP
Household population aged 12 and over, 2000/01	CANSIM
<ul style="list-style-type: none"> • By age group and sex, Canada 	HTML PDF
<ul style="list-style-type: none"> • By sex, Canada, provinces, territories, health regions and peer groups 	HTML PDF MAP
Household population aged 12 and over, 1994/95-1998/99	CANSIM
<ul style="list-style-type: none"> • By age group and sex, Canada excluding territories 	HTML PDF
<ul style="list-style-type: none"> • By sex, Canada and provinces 	HTML PDF

File Edit View Favorites Tools Help Address <http://www.statcan.ca/english/freepub/82-221-XIE/00604/pdf/2116m.pdf> Go

Save a Copy Print Email ABC Review & Comment Sign

Select Text 125%





Statistics Canada / Statistique Canada

Canada



Français	Contact Us	Help	Search	Canada Site
The Daily Census	Canadian Statistics	Community Profiles	Our products and services	Home
				Other Links

[Health Indicators, vol. 2004, no. 1](#) > [Data tables](#) >

Health behaviours

Smoking

- [Smoking initiation](#)
- [Smoking status](#)
- [Changes over time in smoking behaviour](#)

Health Indicators

82-221-XIE

- [About Health Indicators](#)
- [Health regions](#)
- [Highlights](#)
- [Data tables](#)
- [Profiles](#)
- [Definitions](#)
- [Data quality](#)
- [Related products](#)

[Smoking initiation](#)

Household population aged 12 and over, **2003**

[CANSIM](#)

- By age group and sex, smokers and former smokers, Canada

[HTML](#)

[PDF](#)

- By sex, smokers and former smokers, Canada, provinces, territories, health regions and peer groups

[HTML](#)

[PDF](#)

[MAP](#)

Household population aged 12 and over, **2000/01**

[CANSIM](#)

- By age group and sex, smokers and former



[Newsflash](#)

[Communiqué](#)

[CANSIM Help](#)

View list of [online catalogue products](#), some of which may be **free**, related to this table.

Note: You **must** select at least one item from each one of the lists below:

Geography (167 items)

Select all Deselect all View checklist and footnotes

- Canada [00]
- Newfoundland and Labrador [10]
 - Health and Community Services St. John's Region, Newfoundland and Labrador [1001-A]
 - Health and Community Services Eastern Region, Newfoundland and Labrador

Age group (14 items)

Select all Deselect all View checklist

- Total, 12 years and over
- 12-19 years
- 12-14 years
- 15-19 years
- 20-34 years

- Smoking initiation age (5-14 years)
- Smoking initiation age (5-11 years)
- Smoking initiation age (12-14 years)
- Smoking initiation age (15-19 years)

Characteristics (8 items)

Select all Deselect all View checklist

- Low 95% confidence interval - number of persons
- High 95% confidence interval - number of persons
- Coefficient of variation for number of persons
- Percent
- Low 95% confidence interval - percent

Note: By default, only data for the most recent year available will be retrieved (this reduces the amount of data and download time). You may use the lists below to select a different time frame.

Reference period:

From: 2003 To: 2003 (Data published every 2 years)

Retrieve as a Table Retrieve as individual Time series

Other Means of Access

- Public Use Microdata File (PUMF)
- Research Data Centre

Methodological Challenges

- It's not all there...
- Boundary Changes
- Sub-regional estimates? Not likely...
- **Kibbles 'n bits 'n bits 'n bits**
 - Eventually everything gets too small
- **Solutions are Technically Demanding,
Data Sharing is difficult.....**

Working towards a Solution...

- ATWGPRS
- Alberta Technical Working Group on Provincial and Regional Surveillance

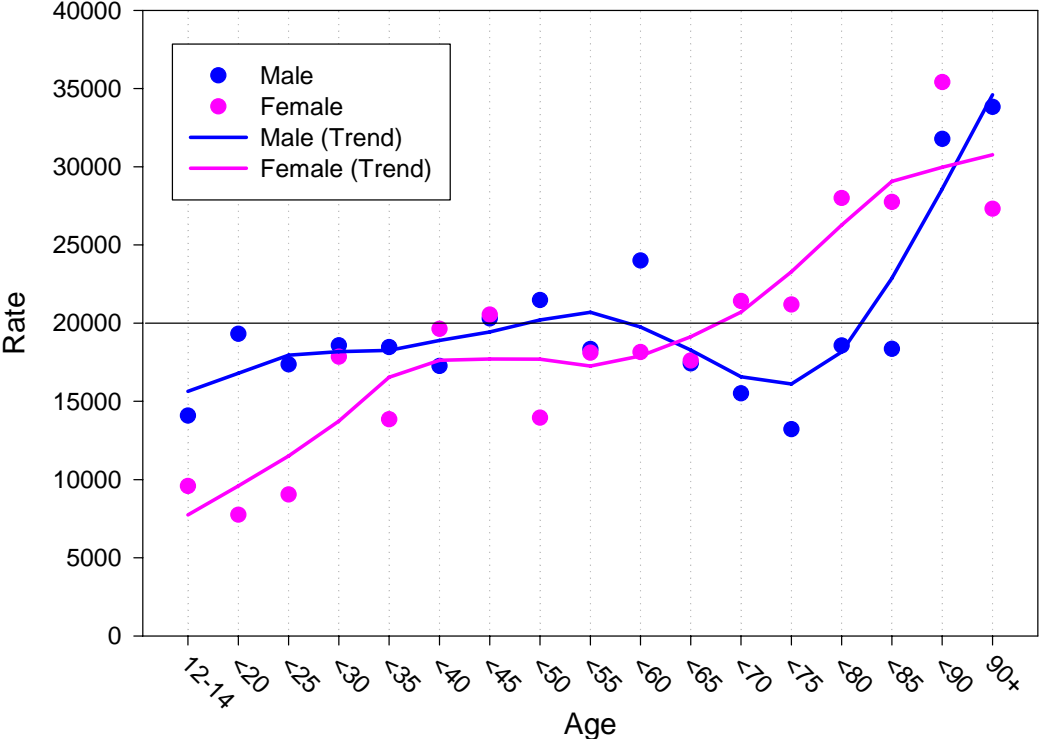
Recommendations

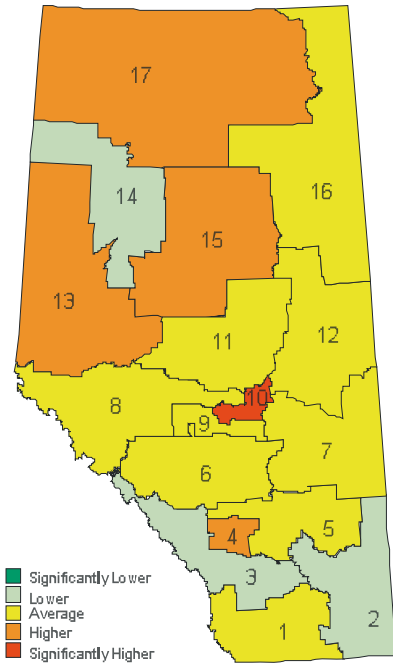
- Check out the internet
- Who has the PUMF?
- Support the work of the ATWGRPS
- If you can't get the data at the level you desire, get it at a higher level at least to supply a context...
- including Statistics Canada's Health Reports

Some Examples...

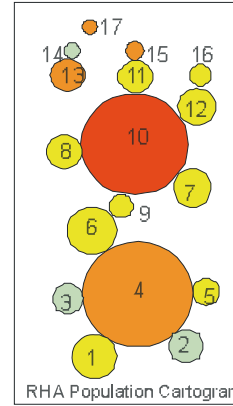
Social Support

Figure 2: Relationship between proportion in lowest Social Support quintile and age and sex, CCHS 2000/2001, Alberta

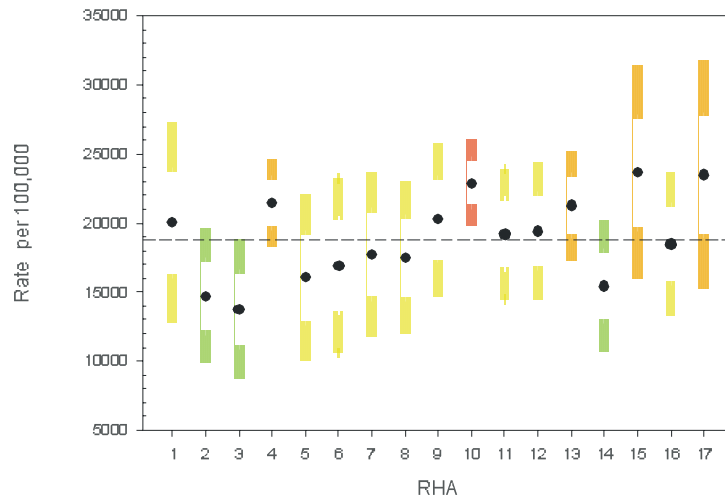




■ Significantly Lower
■ Lower
■ Average
■ Higher
■ Significantly Higher



RHA Population Cartogram



Self-Reported Health

- What is the relationship between self-reported health status and administrative measures of health care utilization?
- Start by examining the ubiquitous question:

GH-Q1 “In general, would you say your health is:

Excellent?

Very Good?

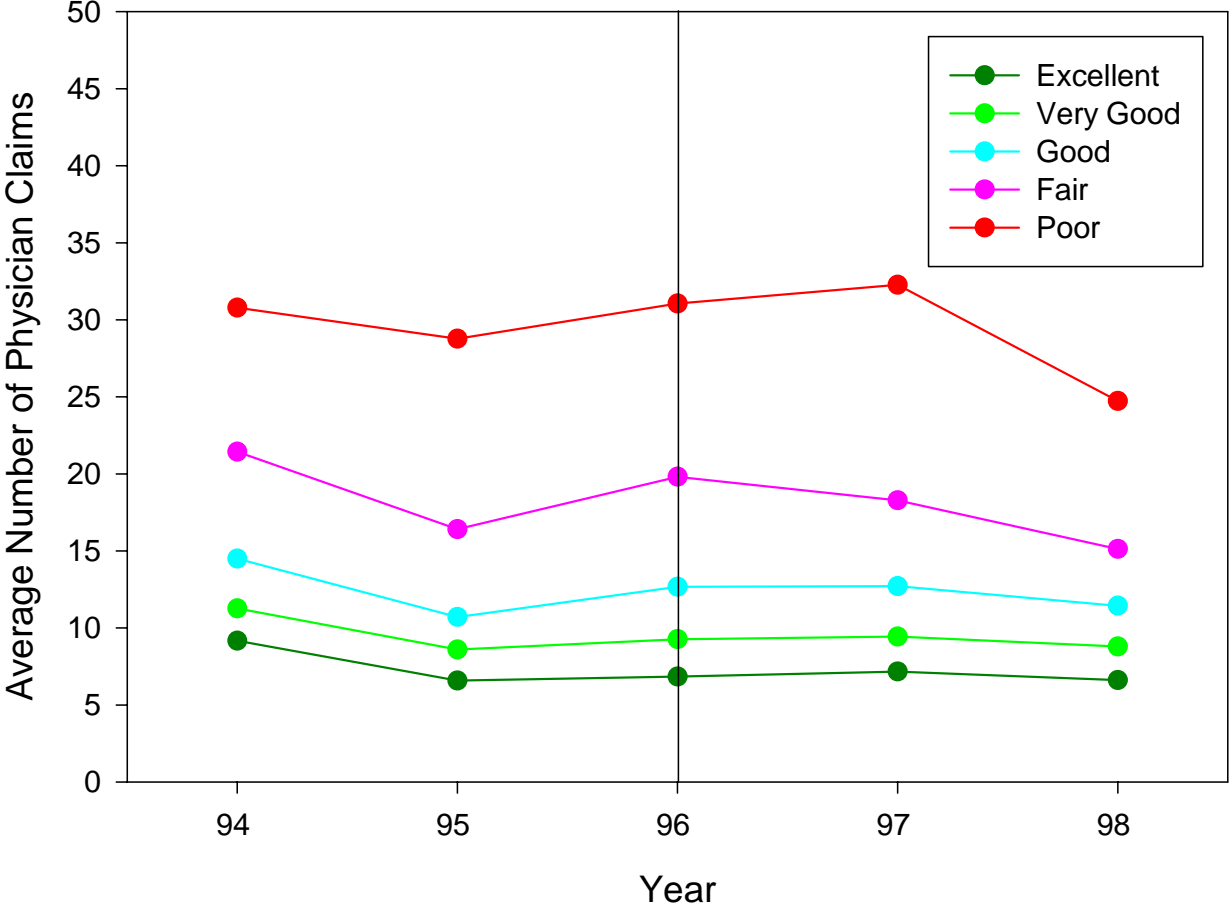
Good?

Fair?

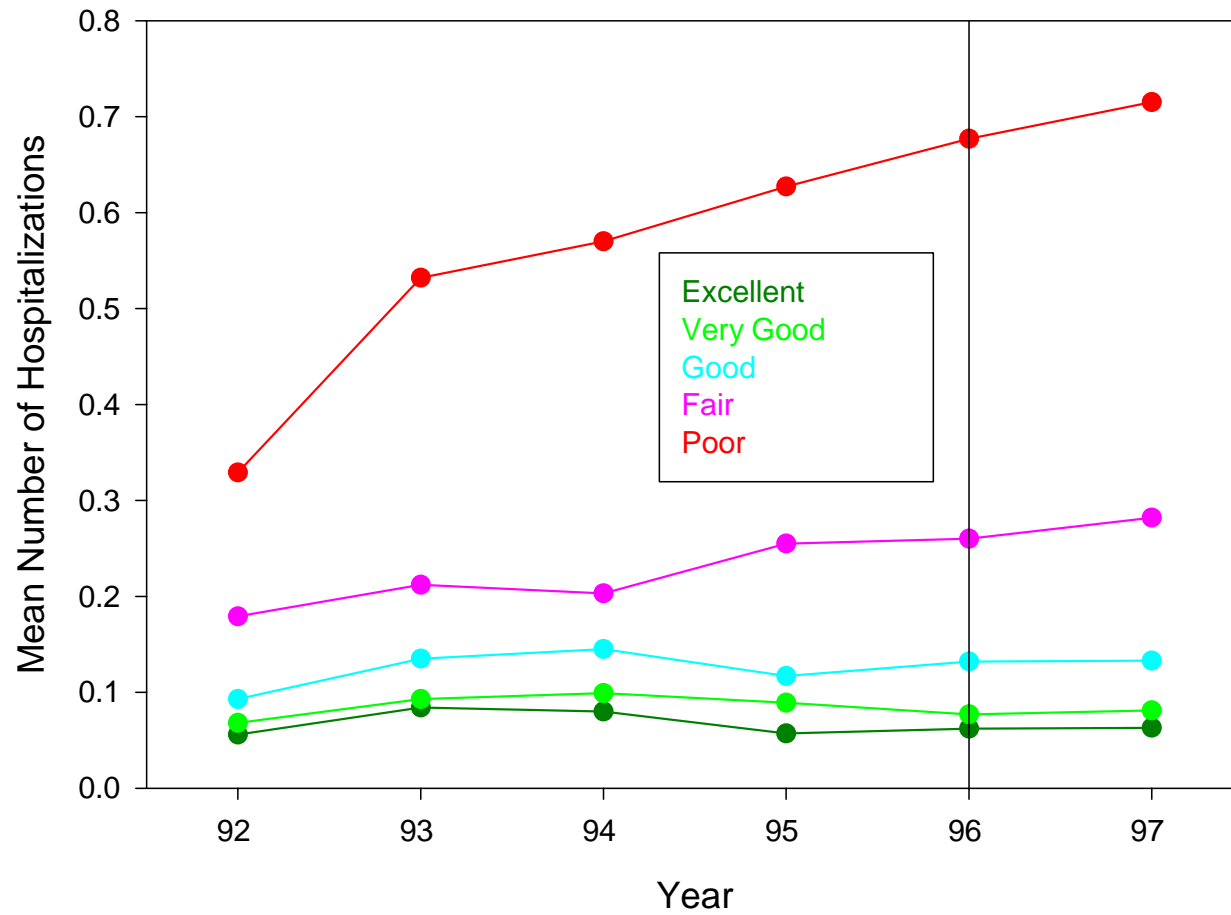
Poor?”

SRH and Physician Services

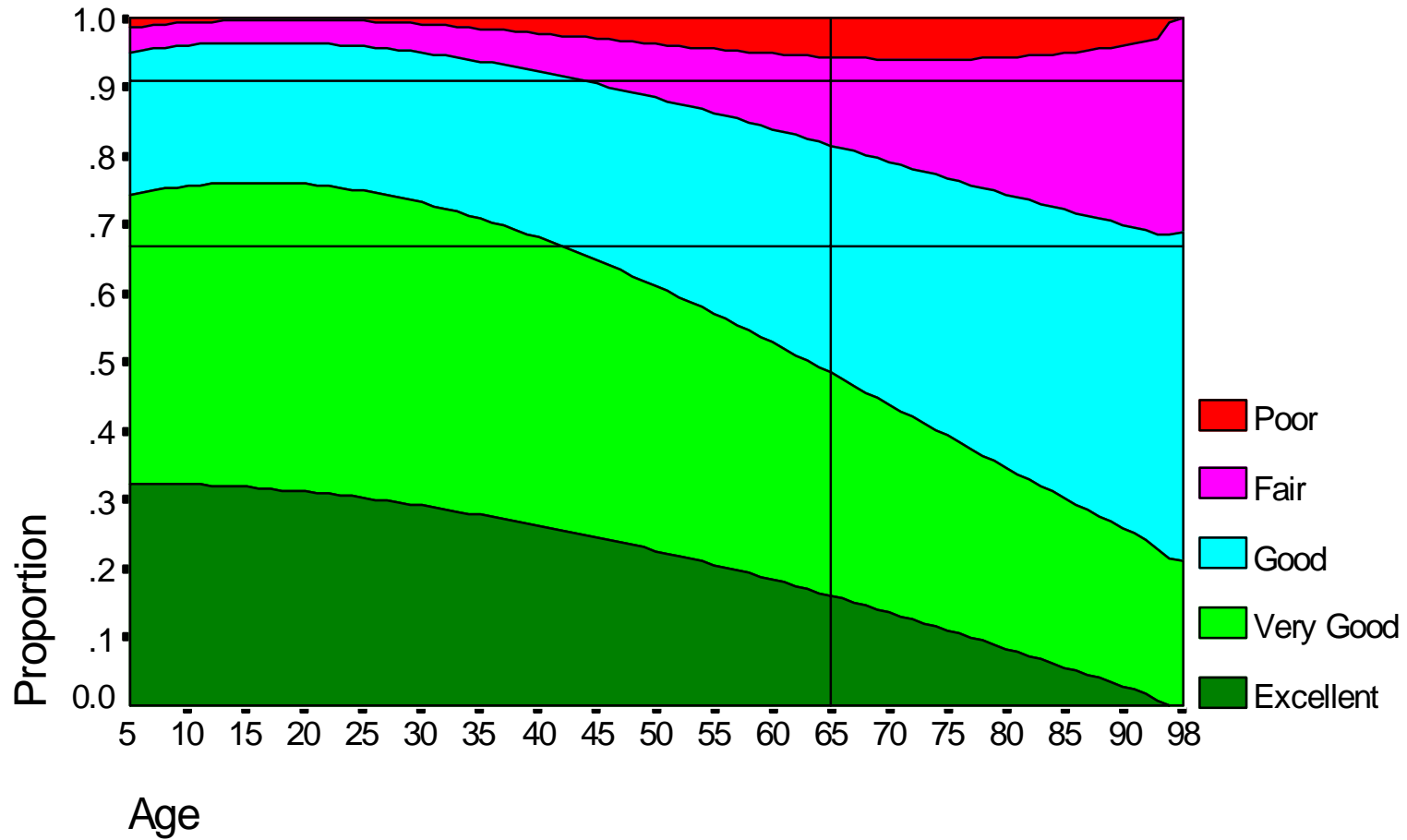
Number of Physician Visits by Level of Self-Reported Health



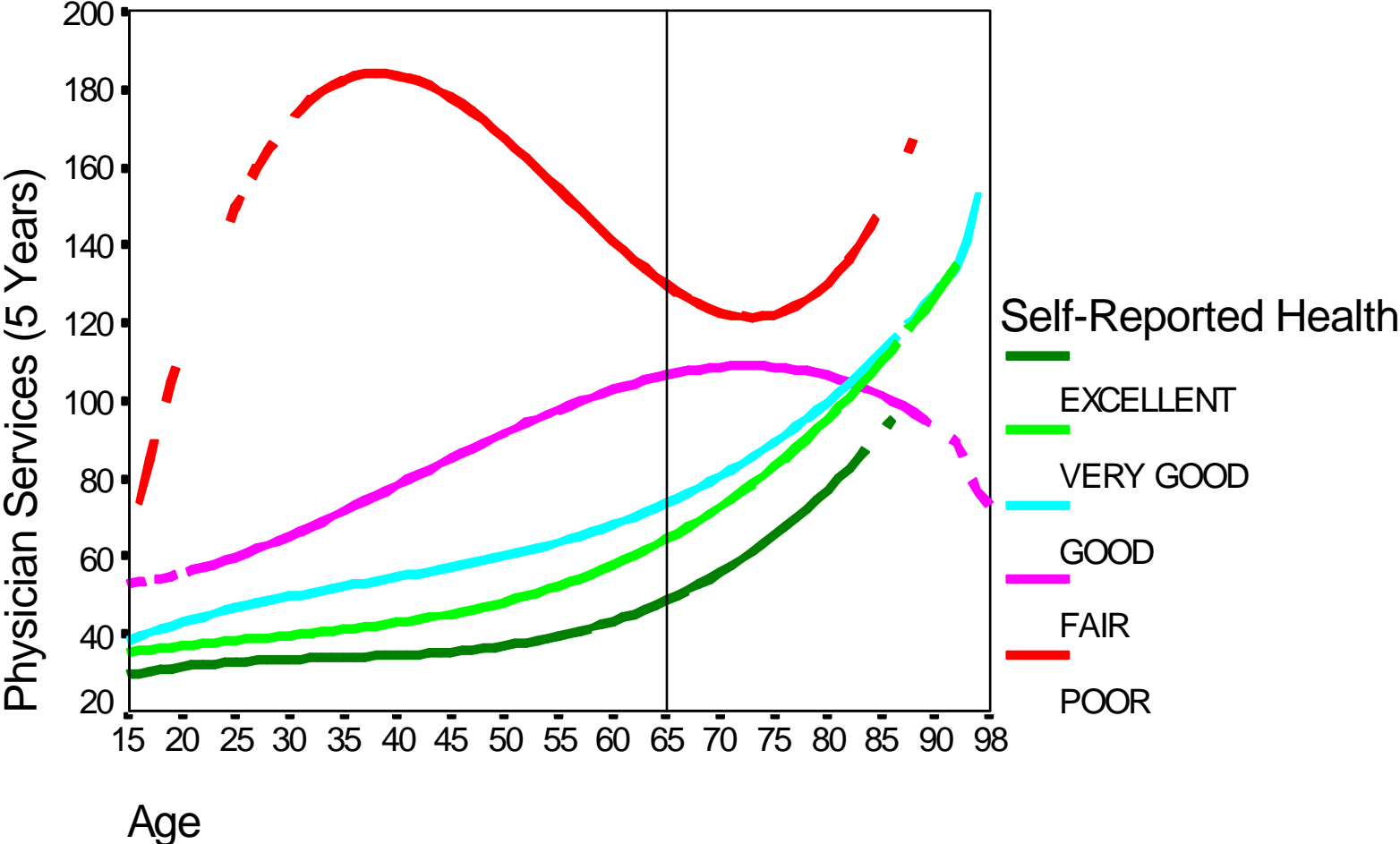
Number of Hospital Admissions by Level of Self-Reported Health

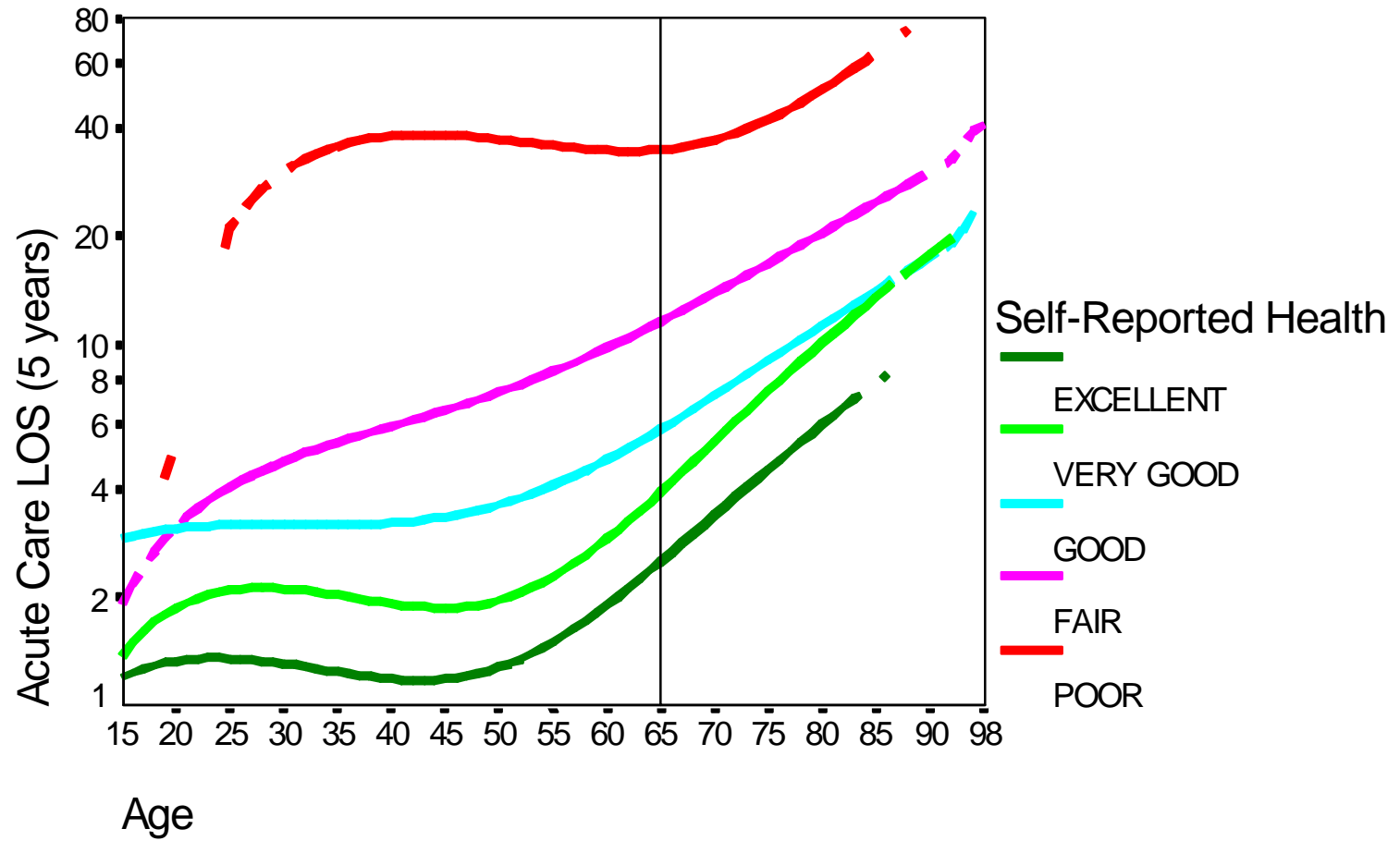


SRH and Age



SRH, Age, and Physician Services

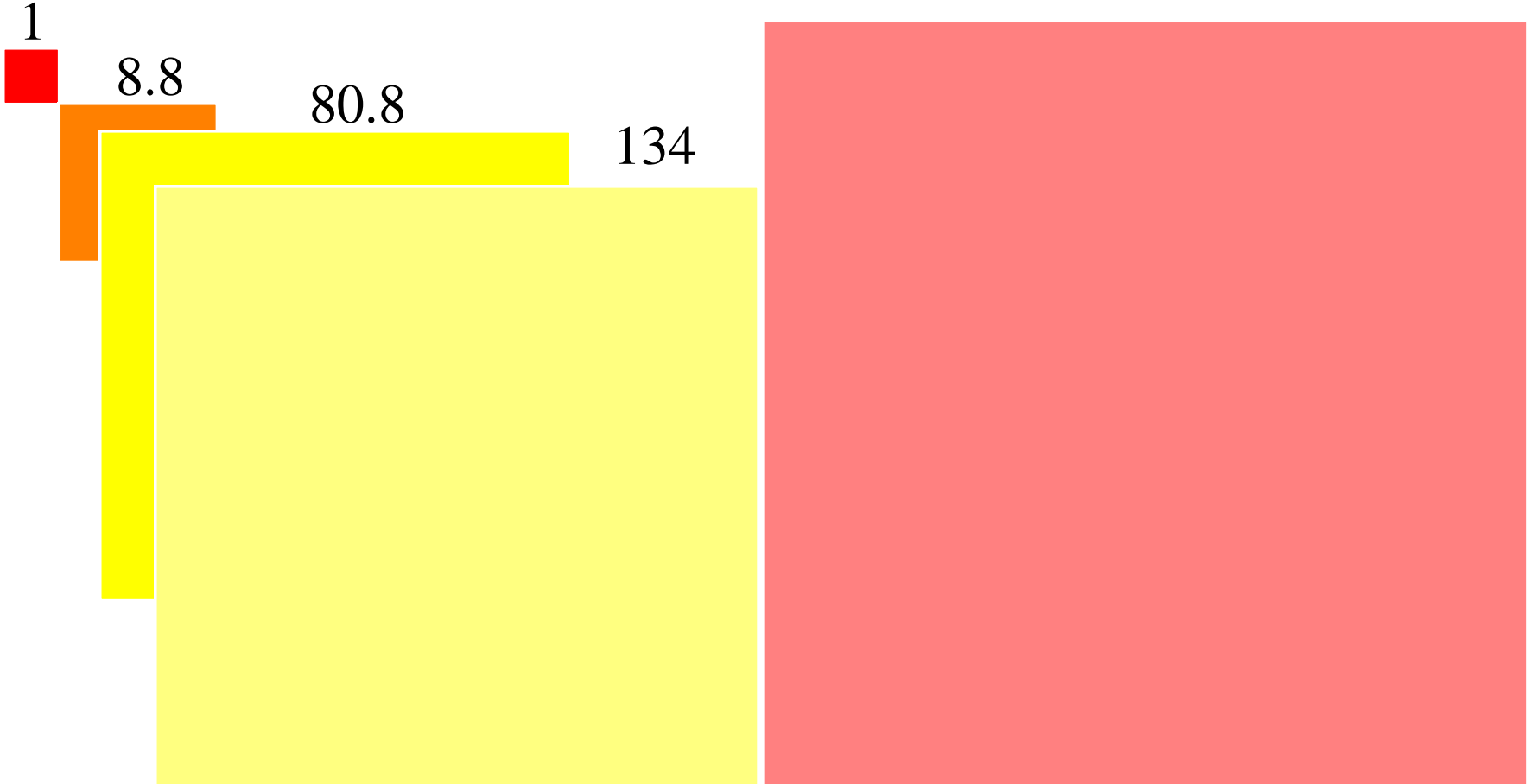




A painful legacy...

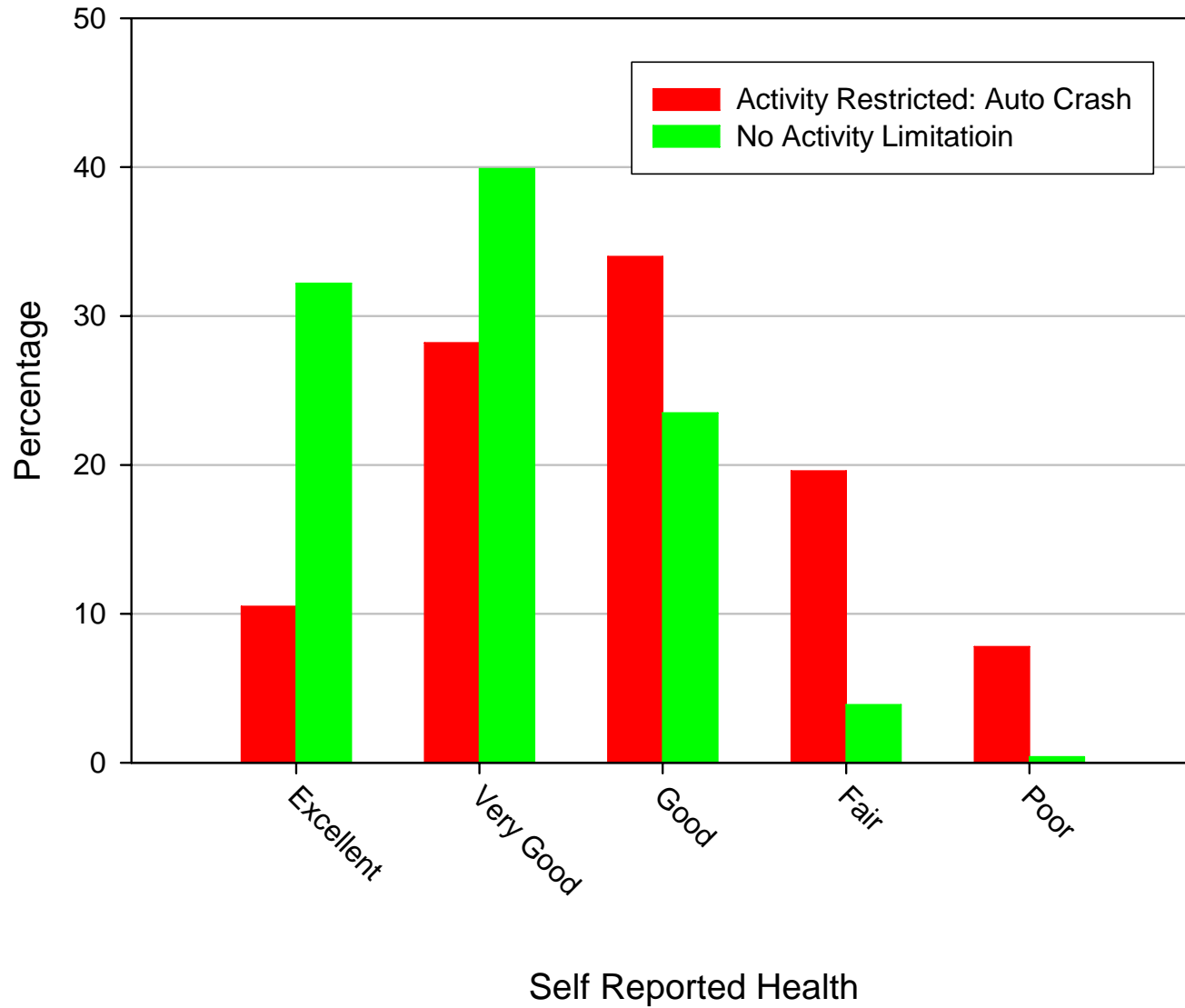
Ratio of Deaths to Hospitalizations
to ER treatments
to 'most serious injury'
to previously disabled by
Motor Vehicle Crashes, Alberta 2000

215.4

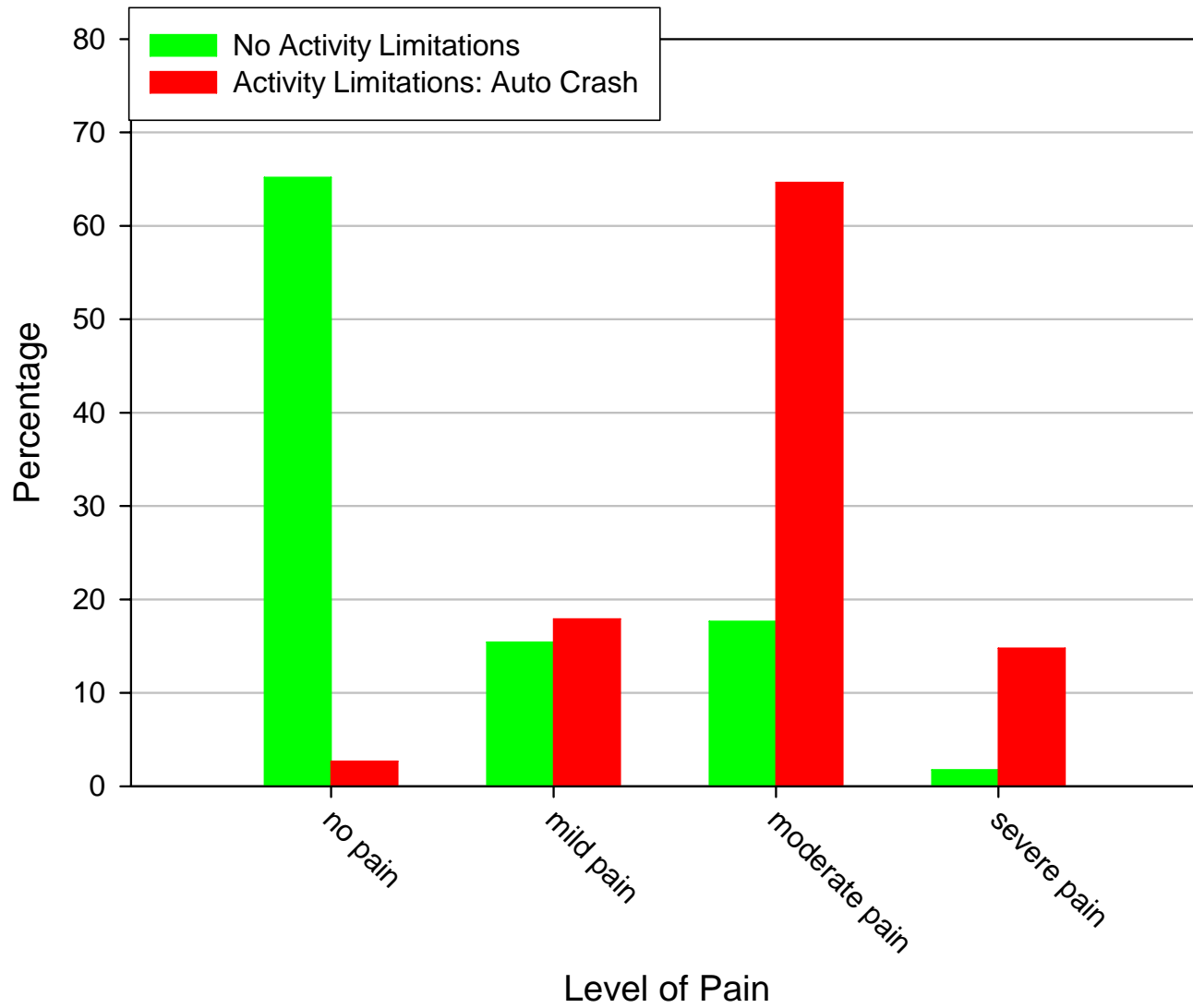


Overall that's 61,136
disabled by 2000

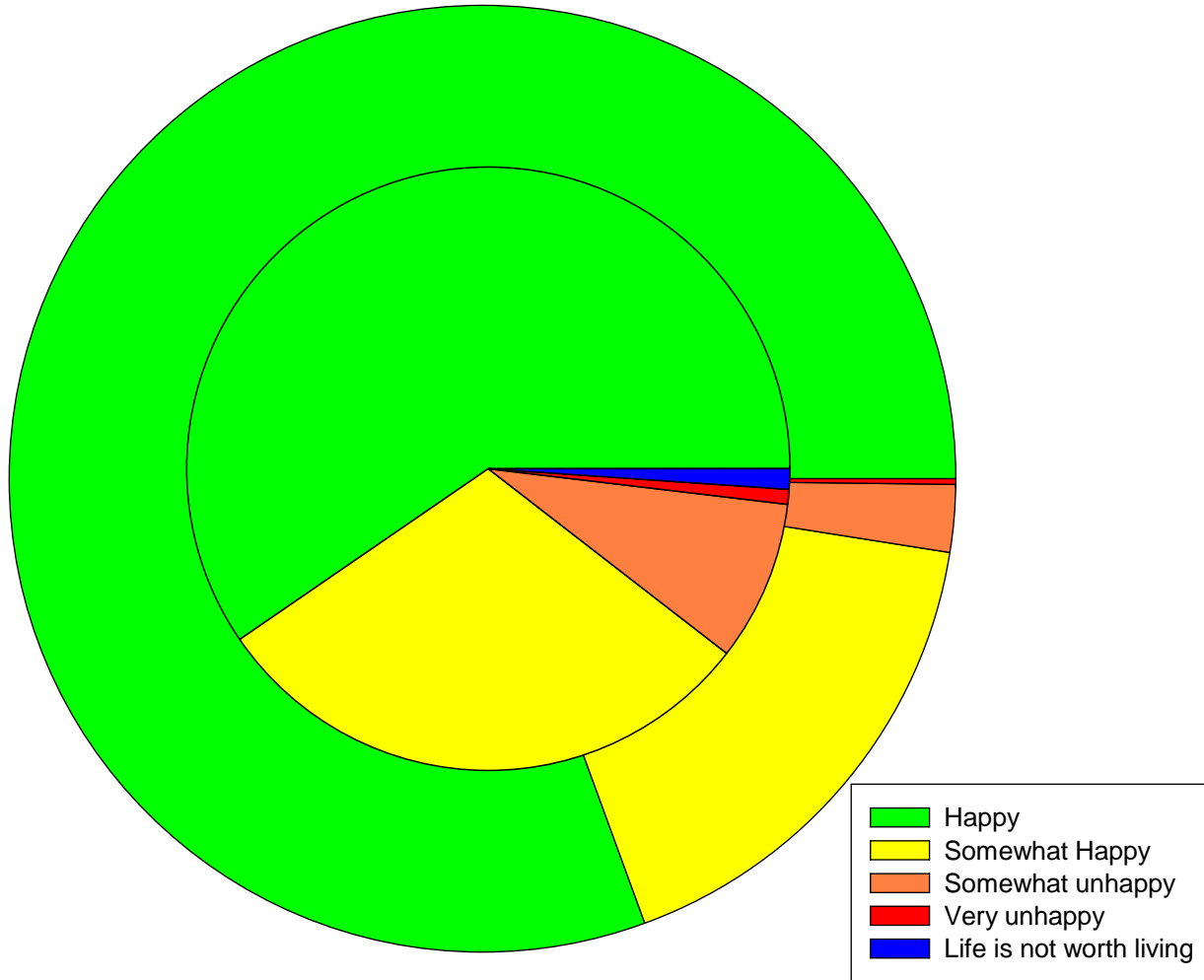
Self Reported Health



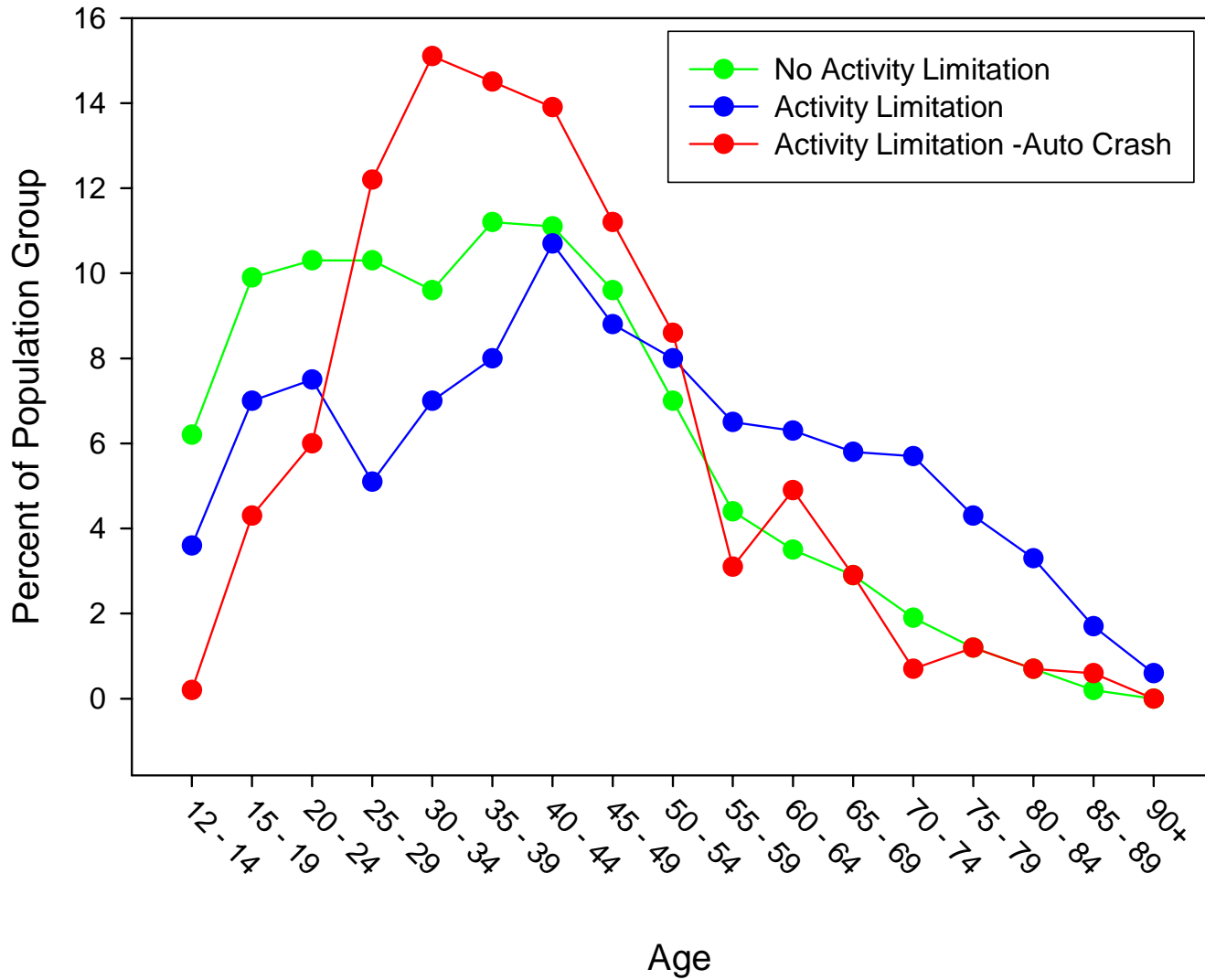
Level of Pain



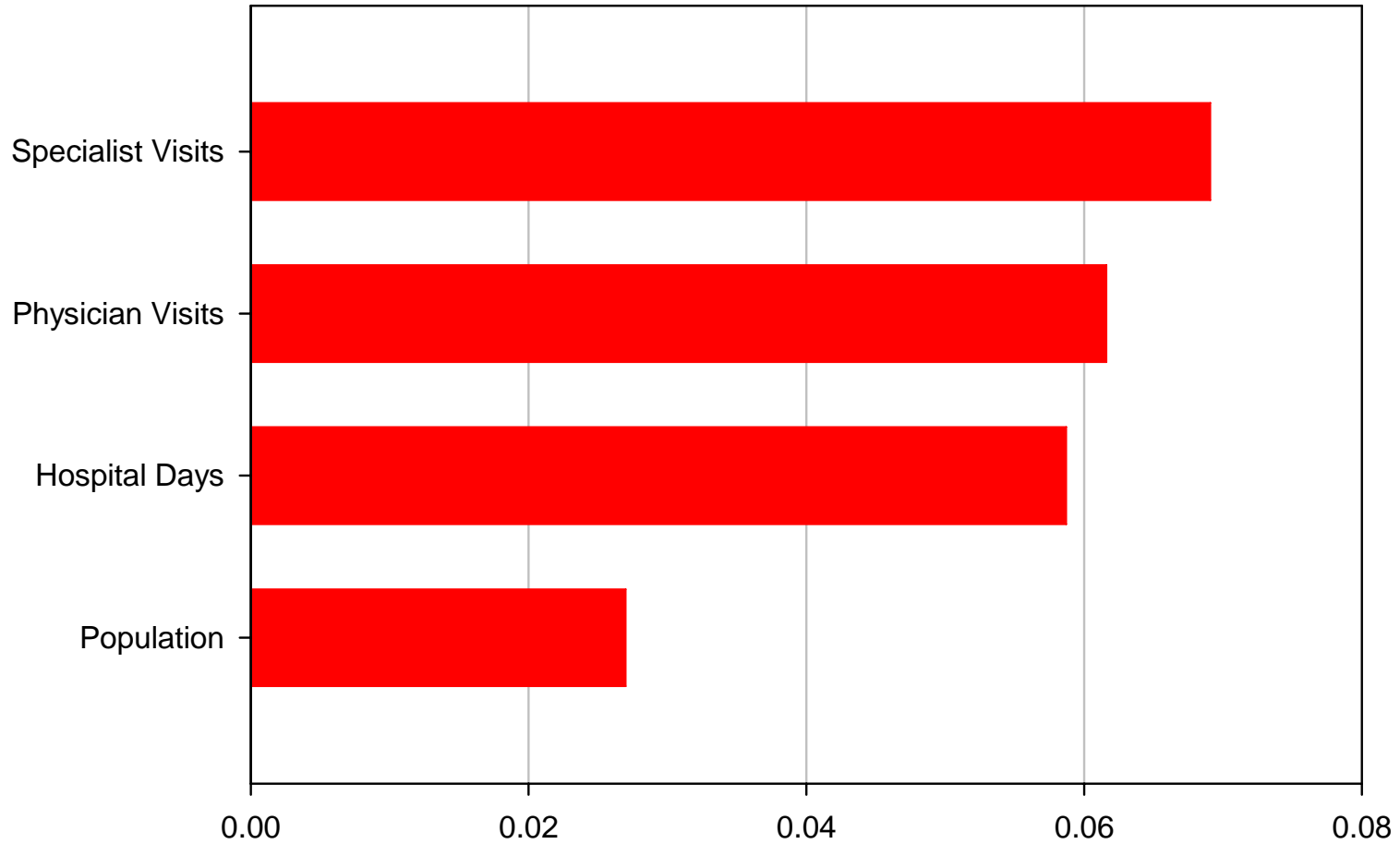
Happiness: No Activity Limitation vs. Disabled by an MVC



Population Distribution, Disability Groups, Alberta, CCHS 2000

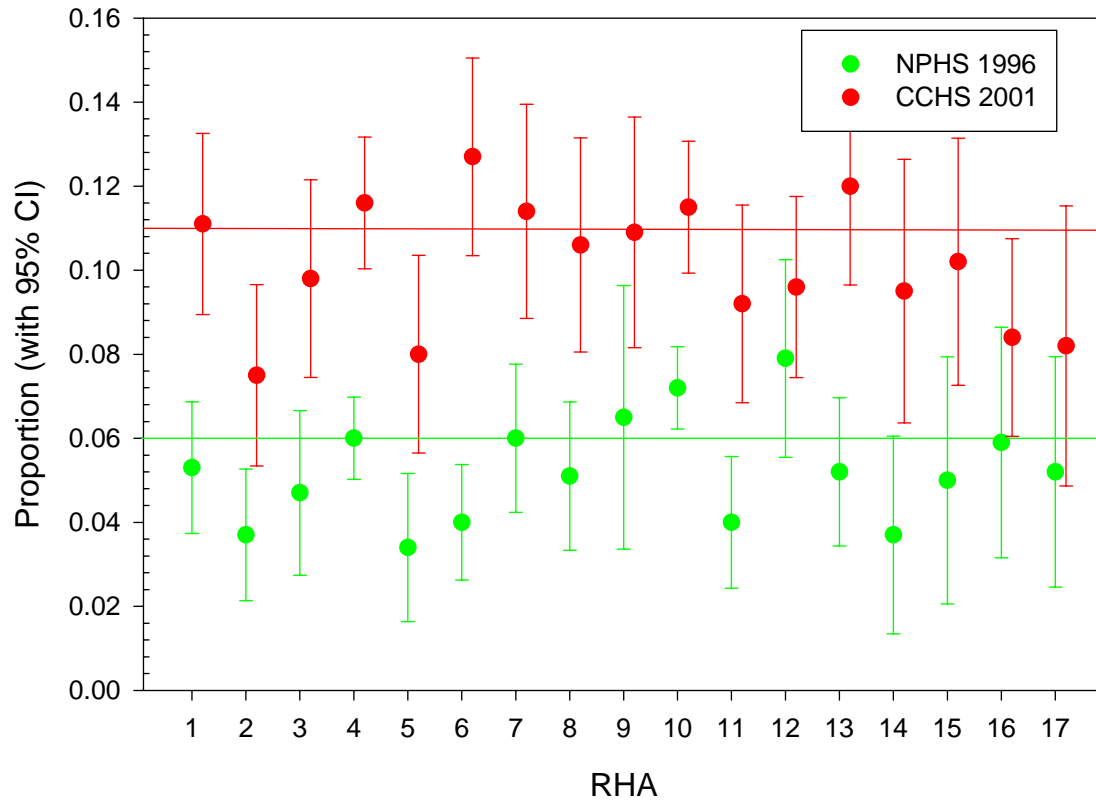


Proportions consumed by Individuals activity limited by auto crash,
Alberta, CCHS 2000



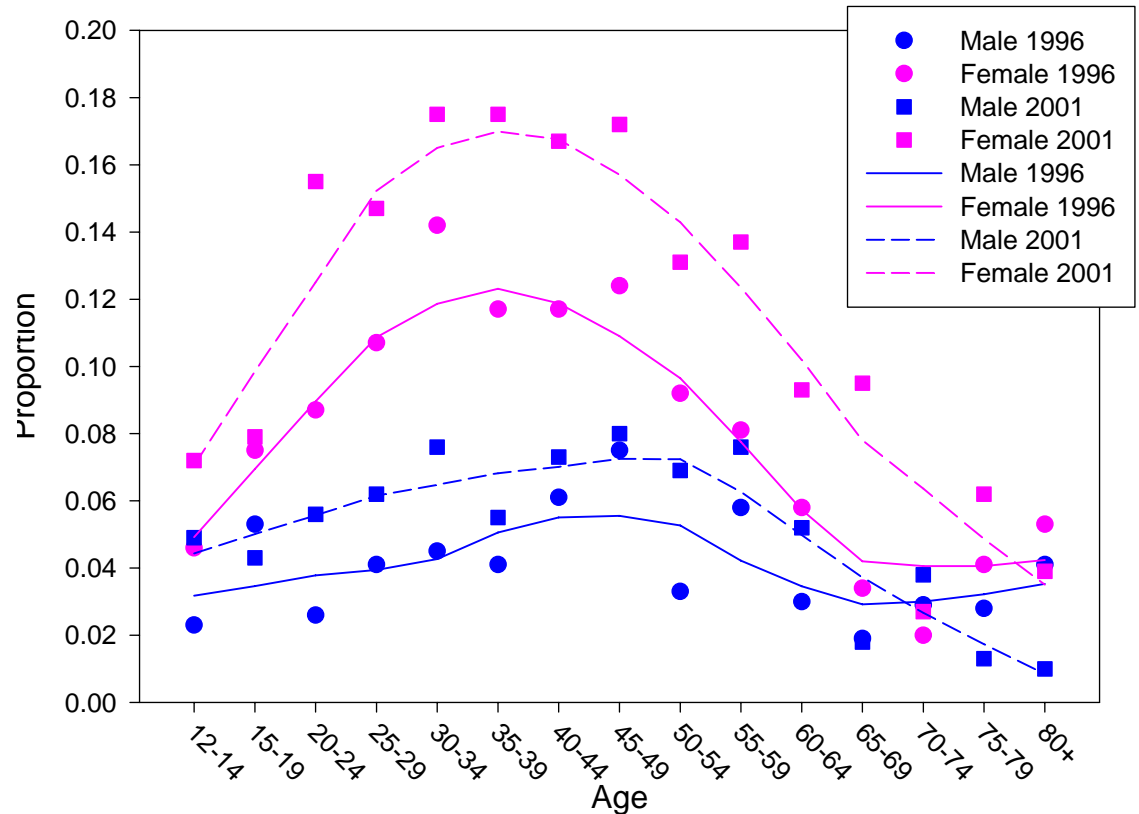
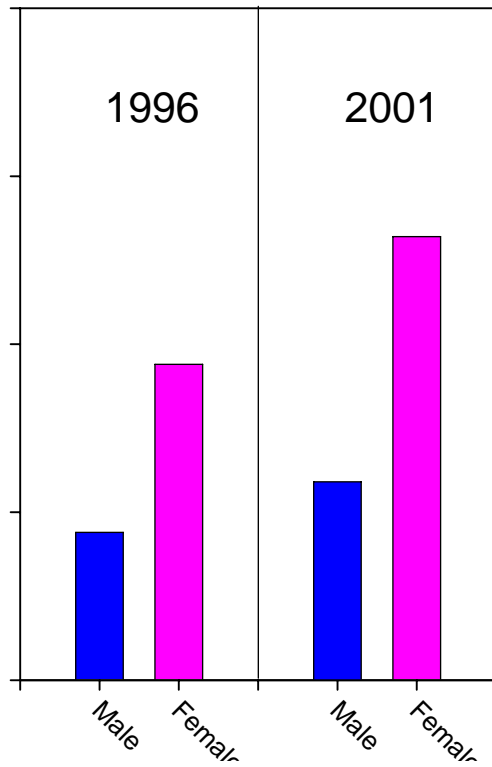
A sad situation?

Proportion 'Probable' Depression, RHA (2001 Boundaries), Alberta, 1996 & 2001

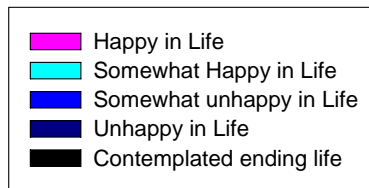
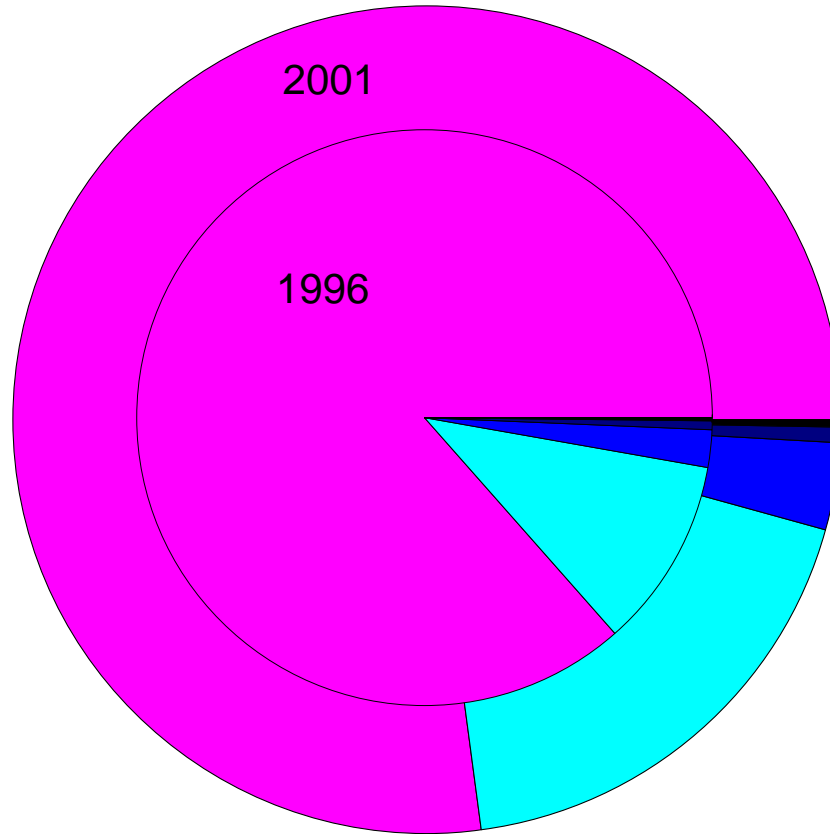


Are there convergent measures that behave in a similar fashion?

Proportion consulting health professional about mental health
By sex, Alberta, 1996 & 2001

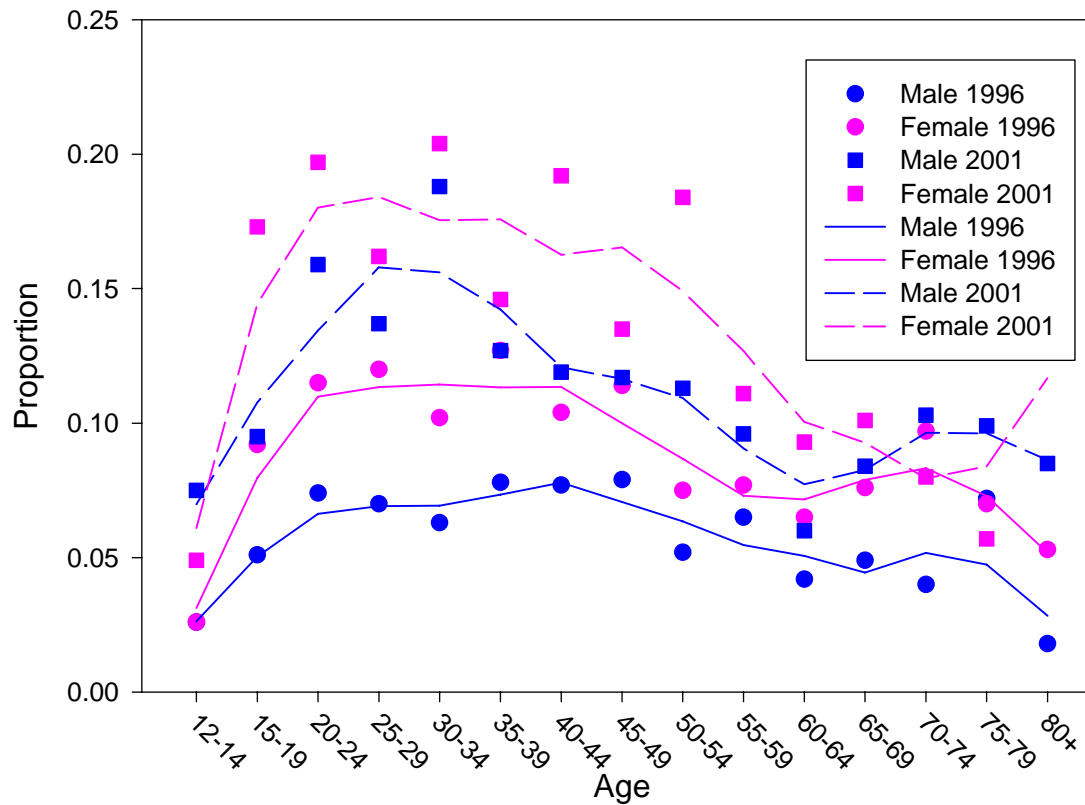


A Shift in Happiness



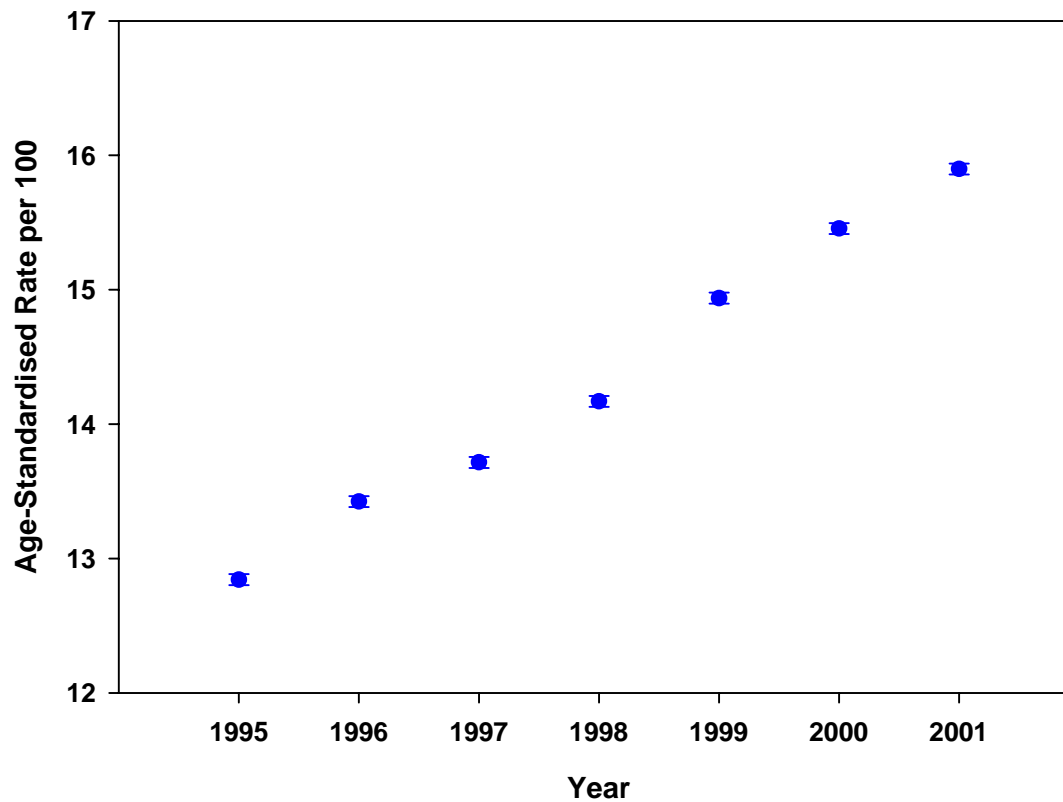
Reports unmet health needs

Proportion self-perceived unmet health care needs,
By sex, Alberta, 1996 & 2001

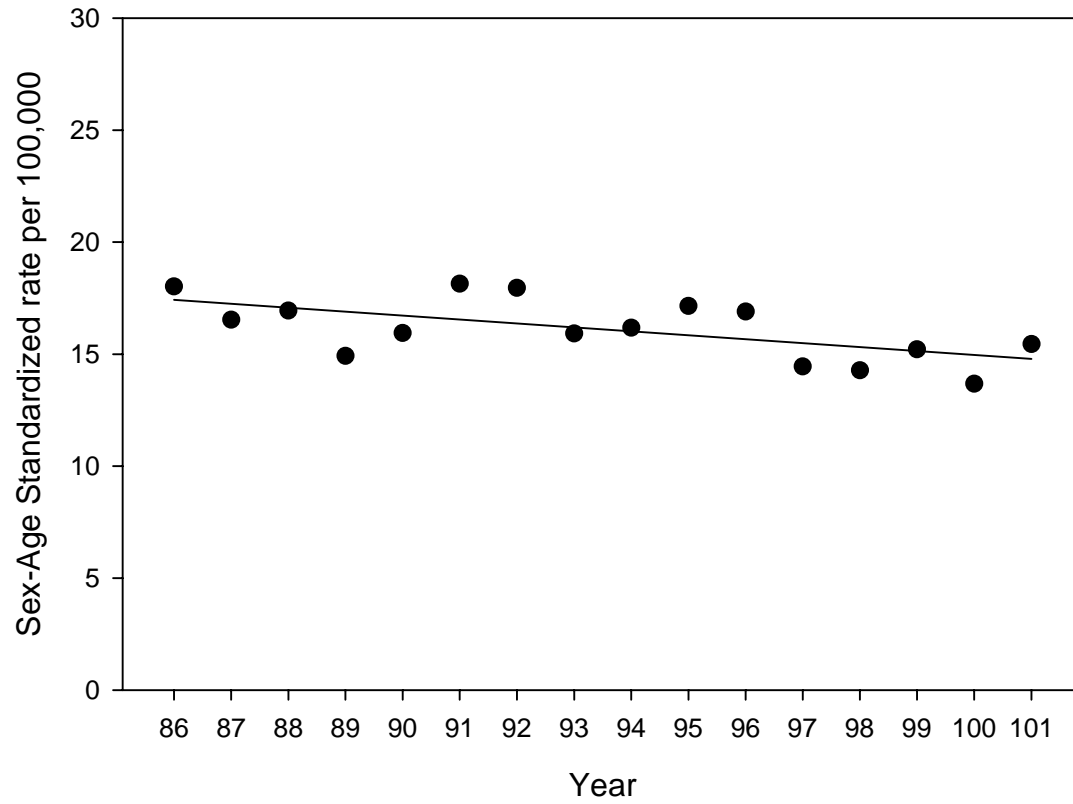


Are there external differences which seem consistent?

Proportion having one or more Physician Visits in a year
for Mental Health Services (ICD-9-CM 290-316)
Source: Physician Claims Database



Suicide rate, Alberta



Questions?