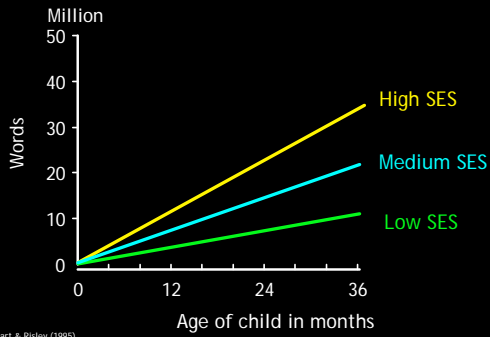


Estimated Cumulative Difference in Language Exposure by 3 Years of Age



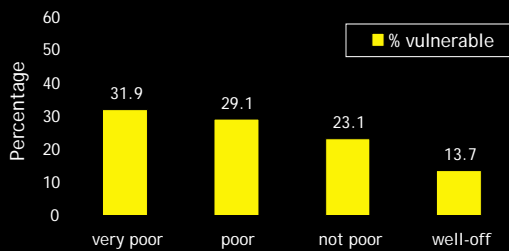
Source: Hart & Risley (1995)

What environments/experiences do we want for young children?

1. Encouragement of exploration
2. Mentoring in basic skills
3. Celebration of developmental advances
4. Guided rehearsal & extension of new skills
5. Protection from inappropriate disapproval, teasing, or punishment
6. A rich & responsive language environment

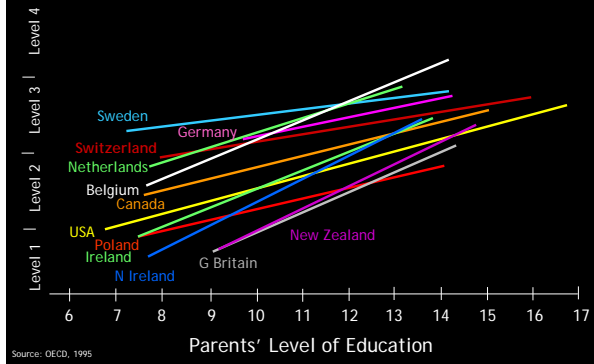
Source: Ramey & Ramey, 1998

Canada: % Vulnerable by SES



Source: NLSCY/UEY 1999-2000; EDI 1999-2000

Numeracy Scores for Youth 16-25 (IALS 1994)



Implications of the Gradient

- no 'target' group -- geographic, SES, ethnic, biological -- carries most of society's vulnerability
- real improvement requires lowering and flattening the gradient
- that means creating *de facto* 'universal access' to environments

Changing ECD across the Population



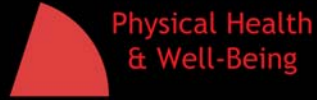
The Early Development Instrument



A Population Based Measure

What Does the EDI Measure?

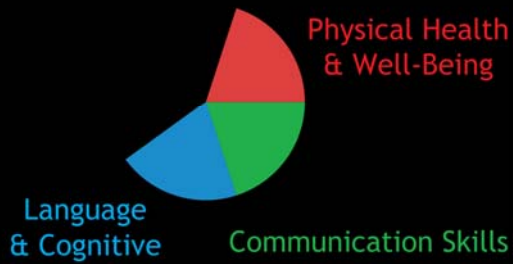
What Does the EDI Measure?



What Does the EDI Measure?



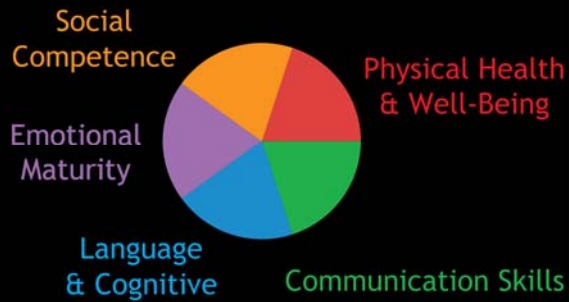
What Does the EDI Measure?



What Does the EDI Measure?



What Does the EDI Measure?



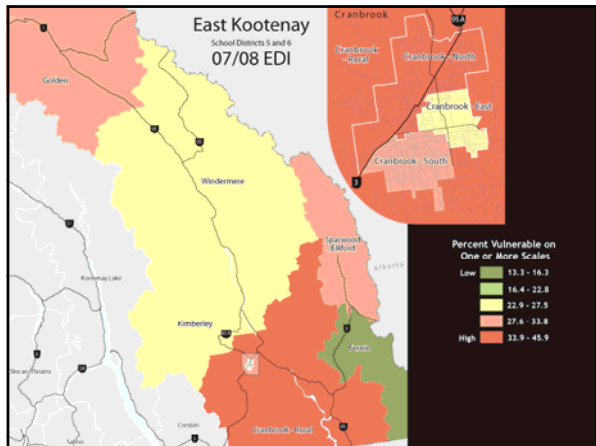
Kindergarten to Grade 4: EDI to FSA (Predictive Validity)

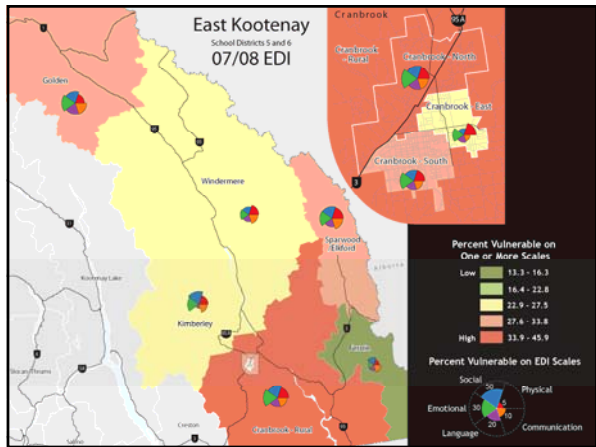
# of EDI Vulnerabilities (kindergarten)	% Not passing (Grade 4 FSA)
Numeracy	
0	12.3
1	22.2
2-3	33.8
4-5	55.6
Reading	
0	17.8
1	33.9
2-3	43.1
4-5	68.3

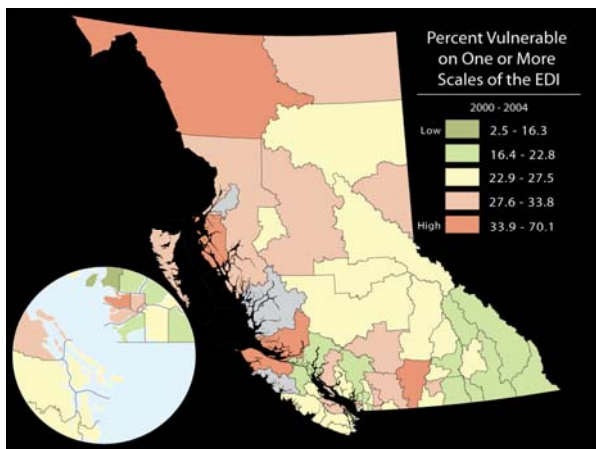


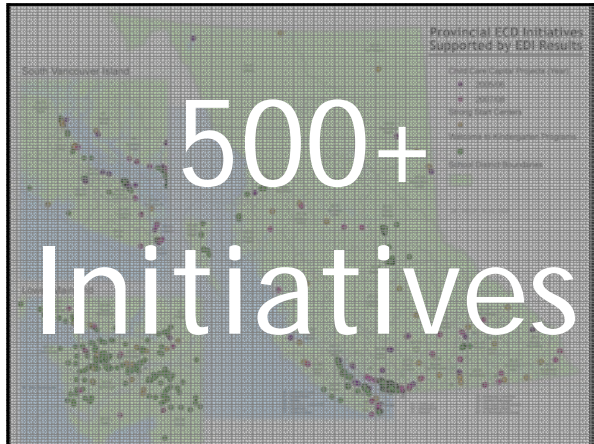


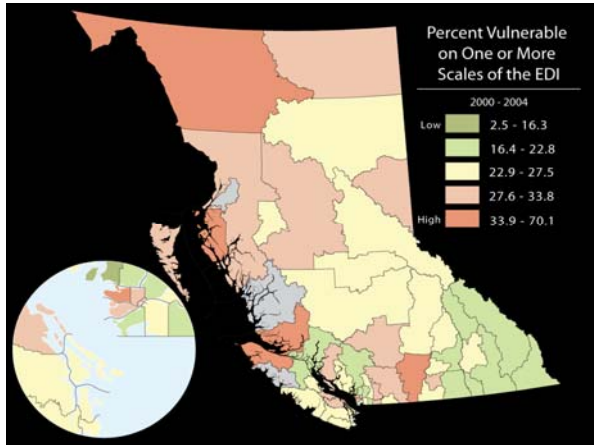


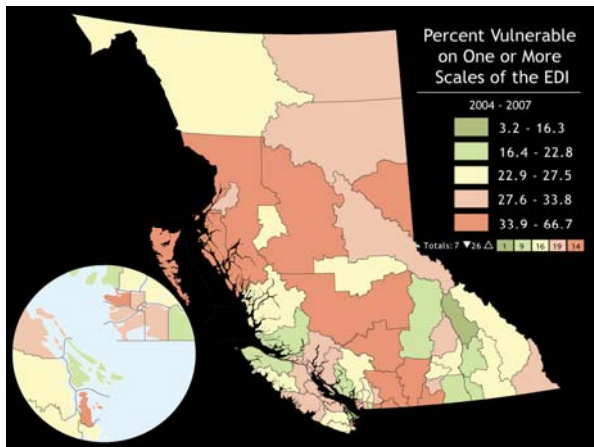




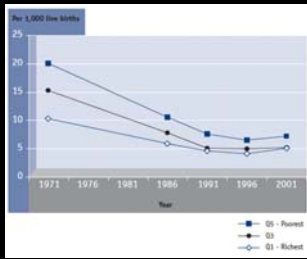






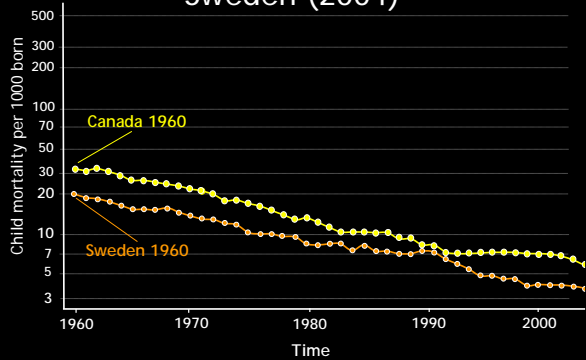


Infant mortality rate, by neighbourhood income, urban Canada, 1971-2001



Source: The Chief Public Health Officer's Report on the State of Public Health in Canada, 2008.

Under 5 mortality in Canada and Sweden (2004)



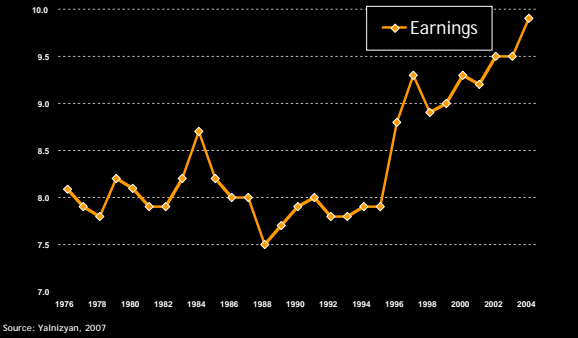
Social spending as a % of GDP

Steepest declines by country:

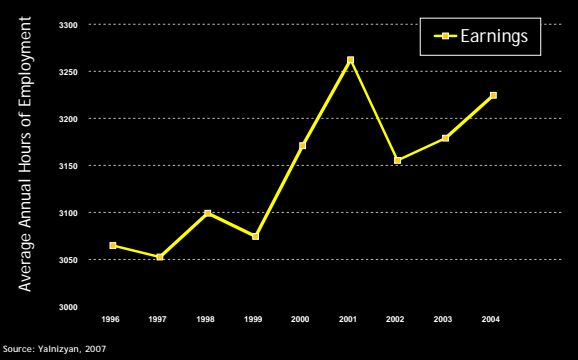
- Ireland: - 28% (1986-1998)
- Netherlands: - 21% (1983-1998)
- Canada: - 19% (1992-1999)**

Source: Organization for Economic Cooperation and Development (OECD), Public social expenditure by main category as a percentage of GDP (1980-1998), Paris, 2004

After-Tax Income Gap for Families Raising Children in Canada (ratio of after-tax income in deciles 10 and 1, 1976-2004)

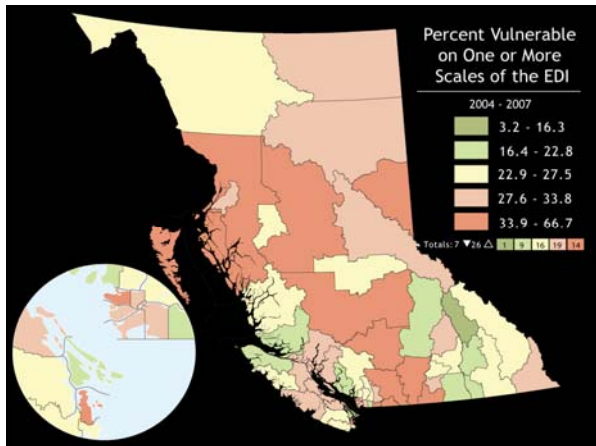


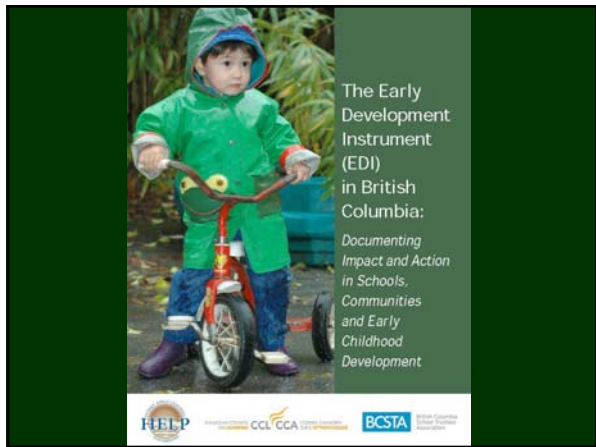
Annual Average Hours Worked by Families Raising Children, Canada, 1996-2004

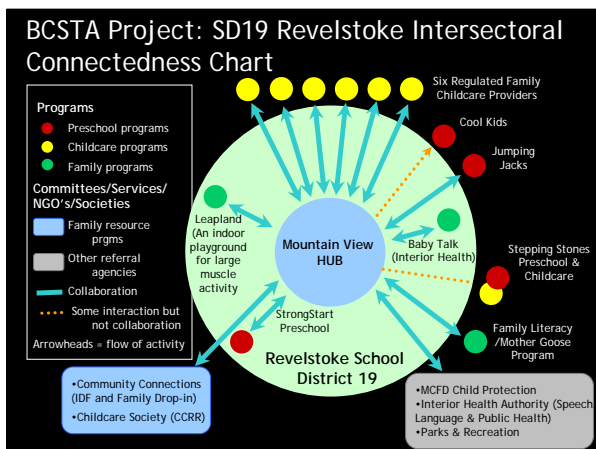


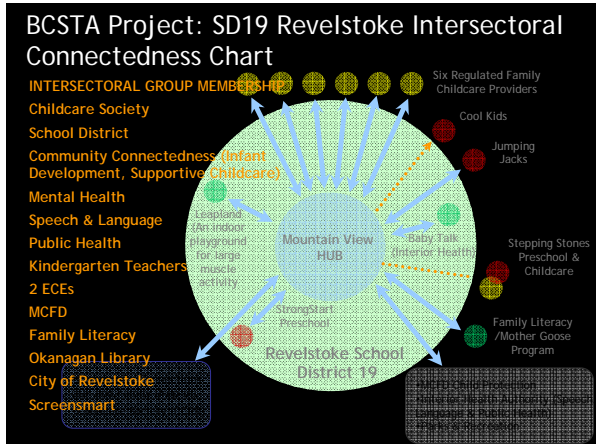
2008: How many of the 10 UNICEF Benchmarks for Early Childhood Education and Care has each country met?

Sweden	10
Iceland	9
Denmark	8
Norway	8
France	8
UK	5
Germany	4
Japan	4
United States	3
Canada	1









- ### Lessons Learned
- a strong inter-sectoral coalition
 - a focus on the EDI results
 - multiple layers of programming and support focused on families
 - community leadership
 - school system involvement

www.earlylearning.ubc.ca
